

Aqua
KANGEN

BY   IBIZA

ALKALINE, ANTIOXIDANT AND OXYGENATED

Aqua KANGEN



BY  IBIZA

Contents

The History of Kangen Water	1
The Opinion of the Experts	3
Pischinger Basic System	5
About Hiromi Shinya	13
About Kangen Water	15
Benefits / Research	21
Kangen Water in Sports	25
The 5 Types of Water	27
Types of water and their uses	29
Dr. Carpenter - Experiences	33
Ionizers Models	35
Prices, Shipping and Issues	47
Pure Water Purifiers	51
Food Services	71
Prices	107

Kangen Water

Background

Lourdes, Tolacote, Nordenou, Hitatenryo

Kangen water is produced thanks to a medical device developed in Japan over 38 years ago. It's been more than three decades of clinical studies demonstrating that Kangen Water helps remove free radicals from the body and reactivates important cells, including DNA. It enhances the immune system and improves the self-healing power of the body. In 1998, Dr. Shirahata from the University of Kyushu discovered the connection that exists between the Kangen Water and the well-known as Holy Water from (which in many parts of the world is known as "miracle water"). Lourdes (France), Tolacote (Mexico), Nordenou (Germany), Hitatenryo (Japan). In these

parts of the world, this water is known for its great healing powers, and its effectiveness against many diseases. Dr. Shirahata found a strong similarity in the water from these different cities. They all have a large number of active hydrogen molecules and powerful antioxidant properties, with an ORP below -250m. "The active hydrogen" is the reason behind such amazing healing abilities. Kangen water, thanks to its powerful electrolysis system, is capable of producing Active Hydrogen, a component which plays a very important role in our health. Kangen water is Alkaline Water, antioxidant and micro-clustered; filled with active hydrogen molecules.



1883 - 1970

Otto Warburg

"Cancerous tissues are Acid Tissues.
Whereas healthy tissues are Alkaline."

In 1931 Otto Warburg received a Nobel Prize for his research in the field of cellular respiration. Some decades ago Dr. Otto Warburg, the only doctor who has won two Nobel prizes in the same field while alive demonstrated that cancer is anaerobic, i.e., it takes place in the absence of free oxygen.

Warburg's theory states:

"All normal cells necessarily need oxygen. In contrast, cancer cells can live without it - a rule without exception."

In his book "The metabolism of tumours" Warburg shows that all types of cancer are characterized by two basic conditions: acidosis and hypoxia (lack of oxygen). He discovered that cancer cells are anaerobic (do not breathe oxygen) and cannot survive in the presence of high levels of oxygen. However, they survive on glucose as long as the environment is free of oxygen. Warburg explains that the lack of oxygen prevents proper completion of the combustion process in the cell so that it gradually becomes impossible to create healthy cells, burn energy and remove waste.

"Even to endure a serious illness such as cancer, the use of Alkaline water could have positive effects."

And in these conditions the immune system finds it increasingly difficult to resist the attacks to which it is subjected as the cells and body fluids are poisoned. If we allow this lack of oxygen to become chronic the immune system slowly exhausts and the disease appears. Cancer can be defined as a defence mechanism generated by certain cells in the body, seeking continuity in its life, which only develops within an acid environment lacking oxygen.

The opinion *Experts*



Dr. Gerald Bresnahan
Cardiologist of Barack Obama

"We have understood the importance of the alkaline diet for decades. We have not succeeded in getting our patients to have a completely alkaline diet because we cannot consume enough alkaline food to keep our body alkalinized. We need to have something to change our body's pH from acid to alkaline based on something daily, such as water. Thanks to that we can keep our bodies with optimum pH.

Hundreds of thousands of our patients have seen remarkable results from drinking Kangen Water®. We are doing our part to bring this technology to the medical community in the United States because Kangen Water® is revolutionizing the health, fitness and well-being of our nation. This is a breakthrough for all and will change the lives of millions of people." Dr. Gerald Bresnahan, MD, FACC, the president's cardiologist.



Dr. Corinne Allen

"Brain swelling can occur for many reasons including: Head injury, premature birth, lack of oxygen and various infections. The resulting inflammation can provide dysfunction in the ability of our body to detoxify harmful substances. In autistic patients, among others, where inflammation of the brain is high, toxins can flood the brain with free radicals". "Kangen Water has given my patients a great source of antioxidants and improved hydration. In our brain studies we observe that our therapeutic expectations have been significantly surpassed with the implementation of Kangen water in our treatments".



Dr. Sherry Rogers

"Alkaline water rids the body of acid waste. After a careful evaluation of the results of the hundreds of patients to whom I recommended alkaline water, I'm convinced that toxicity in the form of acidic waste is the primary cause of the formation of degenerative diseases."

Dr. Susan Lark

"Like vitamins C, E and Beta Carotene, alkaline water acts as an antioxidant because of its strong contribution of free electrons. This will help the body against the development of heart disease, cerebrovascular accidents, immune dysfunctions and other common ailments."



Dr. William Kelly

Dr Kelly is the Head of Surgery. He actively participates in committees in Cape Fear Valley Medical Center. He is the author of the book "Cancer Cure". "Alkaline water produced by water ionizers has become the most important advancement in the field of medicine, since Sir Alexander Fleming discovered penicillin".

Basic System

Pischinger

Pischinger's basic system consists of the lungs, liver, kidney, vascular arterial system, venous vascular system and interstitial cell system. We have also added the skin.

The lungs, liver and kidneys are filters that work on fulfilling this task 24 hours a day, from birth to death. These organs daily filter approximately 7,200 litres of blood by removing all metabolic waste from the cellular system or equivalent to the "excreta" of the cells.

Cells as living organisms produce feed and excreta. Every time a cell feeds (breathes), it generates metabolic waste or "junk" according to the nature of the food that we provide it. The arterial blood, or arterial capillaries are responsible for bringing food to the system (oxygen, sugar, fats, proteins, minerals).

Each nutrient reaches the cells, and it uses or metabolises them. When this nutrient is degraded in the process of cellular respiration, it is pulled by the cell into the extracellular fluid. The fat that gets to the cells is discarded as cholesterol, after being used.

HOW TO DEAL WITH DISEASES IN A BIOLOGICAL AND HOLISTIC WAY

Joaquín Teherán Lora.
(Work based on the explanations of Dr. Alberto Martínez Bosch)

This cholesterol is therefore similar to when we fry with olive oil an egg in a frying pan and when the oil is burned, we through it away. The proteins, after being metabolised, are thrown out by cells as uric acid.

These are simple examples. But we know that cellular biochemistry is more complex. What is the fate of these wastes, being now in the extracellular fluid?

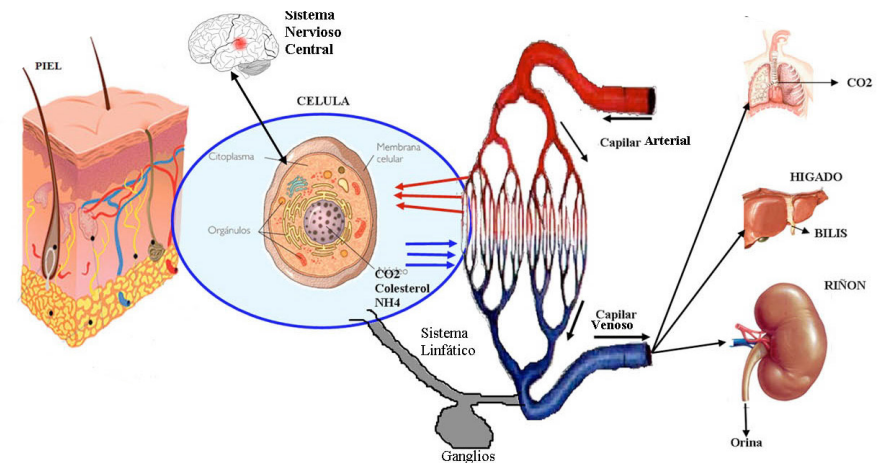
These toxins or waste travel to the lymphatic system to the venous system to ultimately reach the lung, liver and kidney, where they are eliminated.

Presumably it is not difficult to understand that if our natural filter all the waste that cells generate, there are no problems. The problem starts when these filters become clogged, because we never clean or maintain them, since no one taught us.

Let's remember that filters are working 24 hours a day, every day of the year and, like the filter of our car, need periodic cleaning. When clogged, they'll cease to remove metabolic wastes such as carbon dioxide (CO₂), fat waste (cholesterol) and uric acid.

In this way, the body starts to fight these acids to prevent them from reaching the bloodstream and change the pH of the blood, which would mean death in minutes. The body can never allow the blood pH to be modified.

It will retain these free acid radicals in the interstitial space "between the cell and the capillary venous" waiting to drain them. But if this stagnation of metabolic waste is perpetuated in time and it continues to grow, serious problems.



When these metabolic waste or "endotoxins" stand between the capillary and the cell, the following will happen:

- First of all a serious difficulty in cellular nutrition, because the barrier of free acid radicals accumulated in the interstitial space will destroy the nutrients and prevent oxygen to reach the cells.
- A physical attack on the cellular system itself. The "acid waste" (uric acid, oxalic acid, carbonic acid, fatty acids, etc.) is caustic and manages to burn the cell itself.

Alfred Pischinger

We know that 70% of the body is water. Therefore, the cell is floating as if it lived in a "pool" whose waters are crystal clear in a healthy body. But when the filters that drain or are responsible for keeping these waters clean are clogged, the drainage cannot be completed 100%, so the entire ecosystem that surrounds the cell is damaged and that is when "diseases" begin to appear.

The disease begins, then, around the cell. Is the cellular environment which will degrade the cell. This is what Professor Alfred Pischinger from Vienna said, father of the basic system that bears his name, which he described as an amorphous gel-like substance that occupies the extra cellular surroundings.

Described the structure of this exchange system in great detail. It is clearly that Pischinger was an unrecognised genius of conventional medicine. Although much of his research is already accepted in conventional medicine, his name is rarely mentioned in the scientific literature. This is and must be basic knowledge for the formation of complementary medicine.

Going back to this matter, we have said that the disease begins in the cellular environment saturated with acid toxic waste. All acid is corrosive. In this environment full of cellular excreta and acidity, the cell as expected, comes into precariousness.



Why?

Because oxygen and nutrients that must travel from the capillary to the cell must cross the barrier of acids - already mentioned - that stand in their way, but fail, because they get stuck there and get decomposed by acids.

Thus the cell runs out of oxygen and food, in addition to being chemically attacked by its own acids.

In these circumstances, cells have one of two options:

1. THE CELL DECIDES TO DIE

2. THE CELL DECIDES TO DEFEND ITSELF TO SURVIVE

1. The Cell Decides to Die

Due to lack of oxygen and nutrients, also chemically attacked by acids, the cell "decides to die". So dead cells begin to appear in different organs, forming these dead cells known as fibrous tissue. We will then discuss fibromas using their specific names according to the organ where they are formed:

- Prostatic fibrosis if they are in the prostate.
- Breast fibroma, if the dead cells form tissues in the breast.
- Uterine fibroma if the dead cells are located in the uterus.

- Prostatic fibrosis if they are in the prostate.

If the brain cells or brain base cells die we talk about Alzheimer's or Parkinson respectively.

If the acids corrode the insulating layer covering the nerves (myelin), then we talk about multiple sclerosis, Amyotrophic lateral sclerosis (ALS).

They are, in short, the sclerosing diseases are often labelled "idiopathic" because apparently there is no reason why it explain why the organ has fibrosed.



2. The Cell Decides to Defend itself to survive

1. It creates a water balloon and retains liquid in the interstitial space to dilute acids and allow the passage of nutrients from the capillary to it. That is, in a parable, the cell "arms" its mini pool, moves acids and maintains or keeps a channel of communication with the capillaries.

In this way, it still receives food and expels its excreta. All cells that are in the same circumstances start to copy.

In this way all the cells begin to form their own water balloon, and so we will have a person who gains weight and there is no diet that can make him lose weight.

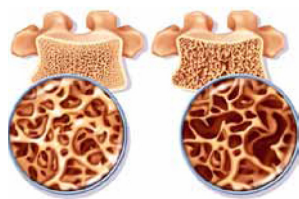


2. Another of the mechanisms used by the cell to survive in a hostile environment is to try to convert the acid medium into basic medium, using buffer salts. This mechanism is known in chemistry as a buffer.

To do this, the body makes use of the salts of other organs, as illustrated by the renowned oncologist Alberto Marti Bosch.

That means that when a vital tissue is compromised, the body "sacrifices" a structure to keep another one alive. For example, if uric acid is found in the interstitial space, the body "steals" minerals from the bones (calcium) to neutralize the acidity, therefore making it easy to understand and comprehend what osteoporosis, arthritis and osteoarthritis are. In this way the cell can survive because the acid neutralized the interstitial space.

But this mechanism implemented at the expense of the bones, creates another problem because the salts precipitate the acids into soft tissue, and calcifications start appearing. Thus having calcifications in breast, lung, liver, bladder, etc.



Bones with Osteoporosis

3. The third defence mechanism used by the cell in its struggle for survival, is DRAINING, by skin or mucosa, opening auxiliary emunctories to remove the excess of endotoxin.

If the body decides to drain all excess garbage that affects it through the skin, we decided to describe this mechanism as a disease called psoriasis, dermatitis, etc.

If the drainage is made by the mucous, we will face Sores in the mouth, stomach, intestines, also known with a specific name for each case.



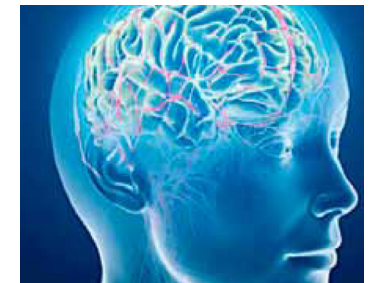
MANY TIMES WE ASK OURSELVES:

Why are there people that drain through the mouth while others do it through the mucous? What is the factor or organ that decides this?

Simply, whichever chooses the point of the body through which excess endotoxin will be drained is the central nervous system, which, as stated by the prestigious Spanish oncologist Alberto Bosch Marti plays the same role a council plays in a city.

The nervous system is the system that gives the orders for the cells to execute. So if the brain orders mouth drainage, the cells from the mouth fulfil the order, as would the intestine cells if they were given the order.

4. We are facing a gripping survive, despite the aggressiveness or hostility of the ecosystem in which they cells live. Given the growing onslaught of acids or waste, the cell uses a fourth (4th) survival mechanism: MUTATE (cancer).



Mutate cancer

When the environment is extremely hostile, the cells choose to 'mutate', because they have to survive at all costs, so they become immortal with the help of telomerase, which is an enzyme that allows the lengthening of telomeres allowing them to extend life. Faced with the option of living or mutating, it changes and creates a new environment to survive.

But to continue living needs ATP energy (adenosine triphosphate) which is produced in mitochondria cells with the use of oxygen (oxidative pathway). As there is no oxygen to make ATP (energy) in its environment then the cell opens an alternative way to elaborate energy without using oxygen. In other words, it becomes anaerobic.

So instead of using oxygen, since there is none left, it uses pyruvic acid which, via fermentation can also produce ATP (energy), more lactic, acid and alcohol. This is the reason why we will find alcohol in all tumours, since this is the fermentation route to obtain energy the cell needs to keep living.

To withstand the attack of foreign acidity, the cell has to be very alkaline inside, so it begins to introduce sodium into it and get the potassium, reversing the usual process of these two minerals.

The tumour cell needs a lot of sodium for alkalinising its cytoplasm and thus counteract the external acid attack. Under normal

conditions, we know that potassium is found inside the cell and sodium outside it.

BIOLOGICAL OR HOLISTIC

When we have a tumour, academic medicine offers 3 solutions: Surgery, radiation and chemotherapy. But it is useful to know that there is a fourth way to deal with all diseases, including cancer:

HYPEROXYGENATION

We know, as it has been said, that the cell needs oxygen to live, without which the cell metabolism is altered with the consequences already described, translated in one word: "Illness".

Therefore if we bring oxygen to the body, we will be providing cells with a change to survive. The simple drainage of toxins (kidney, liver or lung) will get oxygen to the tissues.

But besides the drainage, it is desirable and advisable to use bioxidant therapies either with MMS, ozone therapy or with hydrogen peroxide (food grade) that will provide the body with oxygen.

Bioxidant therapy can be complemented with horseradish to take advantage of its peroxidase and catalyse or accelerate the hydrogen peroxide's breakage reaction, resulting in water and oxygen.

Dr. Alberto Marti Bosch "THE SIEGE" ALKALINISE THE PATIENT

After all that we have reviewed, we must have understood what a disease is, also trying to solve the problem. Knowing that the acid environment around the cell is the source of the problem, it is logical to assert that it is essential to alkalinise the "ecosystem" and clean it of toxic waste that saturates it and makes it biologically incompatible.

This cleaning should be done, above all, consuming abundant electrolytic alkaline water, which as it has a negative redox potential "will sweep" all free acid radicals while helping with the release of the body's natural filters.

There should be a daily intake of at least two litres of mineralised alkaline water. We must also clean and restore the functions of the organs which we said act as body filters, responsible for the removal of endotoxins: the liver, lungs and kidneys.

If these organs recover their functions by proper cleaning, the acid load of the basic system will erode and disappear. An effective way to recover liver function is recommended by Andreas Moritz. We have modified it slightly and renamed it SOMADREN.

To recover kidney function, we must use many plants that have a strong diuretic power to favour the disposal of acids. For us the dandelion or "mea camas" (Taraxacum officinale) in spagyric preparation is greatly recommended. For the lung, plants that help removing more CO2 is the plantain in spagyric preparation.

THERAPEUTIC FAST

It consists in providing the digestive system with a physiological rest with the aim of reducing the toxemia or toxins accumulated in the body.

It is to abstain from solid food. Indeed, fasting is done eating only vegetable juices, fruit juices or vegetable broths in order to cleanse and lower swelling. Fasting should be done at first for one day, then twice a week, during which, besides the above mentioned information we should ingest at least 2 litres of electrolytic alkaline water. Starting from the third week, fasting can be extended to up to 48 hours.

Good Water

Hiromi Shinya

Doctor Hiromi Shinya is renown as a pioneer in the creation of modern colonoscopy techniques. It is a Japanese professional surgeon with over 50 years experience in the field of medicine.

He performed the first non-invasive colon surgery. Using his own creation, the colonoscopy, he discovered the possibility to examine and operate the colon without an abdominal incision.

He was trained in the field of medicine, in schools both in Japan and the US. He is a clinical professor of surgery at the Albert Einstein College of Medicine and Chief of the Endoscopy Unit at Israel Beth Hospital in New York, an adviser in the Maeda Hospital, Vice President of the Japan Medical Association in the United States and a digestive system consultant in Tokyo (Japan).

After 50 years, his career and daily practice is still going. He spends six months in New York, and the other six in Tokyo. Dr Hiromi Shinya is one of the most renown in Japan, and treats members of the imperial family of Japan, as well as government officials. In the US he also it treats celebrities and presidents.

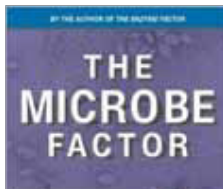
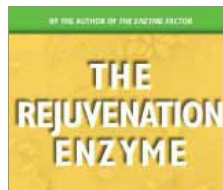
Kangen Water is the only water mentioned in his books:

The Enzyme Factor

The Enzyme Factor 2

The Rejuvenation Enzyme

The Microbe Factor



HE HAS BEEN RECOMMENDING KANGEN WATER TO HIS PATIENTS FOR OVER 10 YEARS.

Dr. Shinya believes in the existence of a direct link between eating habits and health problems. As gastro-intestinal specialist who has conducted more than 370,000 colonoscopy procedures, he knows the diet his patients follow, and as a result gets different results.

Thanks to his experience Dr. Shinya formulated his theory on health and diet for the future. A diet which prevents heart diseases, cancer and type 2 diabetes.

Why does he recommend Kangen Water?

1. Strong reducing power, able to eliminate free radicals using antioxidants.
2. It is free of harmful substances to the human body. (Purified water)
3. It has a molecular micro cluster. This allows it to be more hydrating.
4. It has the right balance of minerals (calcium, magnesium, potassium and sodium)
5. Because of being alkaline, it helps the body keep an optimal pH level.

What does he recommend?

- Drinking 6-10 glasses of water a day
- Drinking 1-3 glasses of water as soon as you get up
- Drinking 2-3 glasses of water 60 minutes before meals.



About

Kangen Water

Kangen Water is: Alkaline, Antioxidant and with a micro-cluster structure.

Kangen Water® is a innovative technology. These devices not only filter tap water, but also make it drinkable, producing five types of water, thanks to its electrolysis system.

This water can be used for different purposes, among which we find: drinking, cooking, beauty and cleaning.

Kangen Water® also containing various minerals like calcium, potassium and magnesium. Unlike other filtration systems that even filtered useful minerals, the ionization performed by Kangen®, keeps the minerals intact. This provides a high quality water that can be used for different situations.

It produces five different water types.

These types of Kangen Water® will be very useful for all your family. With the push of a button, you can create water that will help you care for your plants, cook a delicious meal or clean a stubborn stain.

Go Plus Ibiza ionizers will not only help you stay hydrated and healthy, they will also encourage you to keep your home clean and shiny. Discover all that Kangen® ionizers can do for you!

Kangen Water, Antioxidant

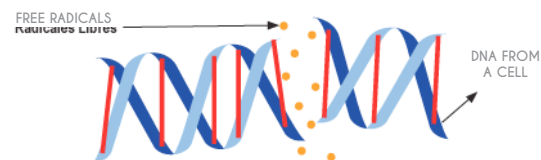
Kangen Water is a powerful antioxidant.

It acts as an essential component to maintain optimal health due to its high ability to neutralize free radicals. Kangen Water® pH 9.5 contains a high level of antioxidants. (The lower the ORP, the greater the antioxidant capacity).

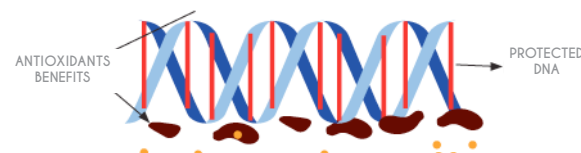
Kangen Water® has a value [ORP] of approximately - 400, more antioxidant than consuming green tea or oranges.

Drinking Kangen Water® we can rejuvenate and prevent the formation of chronic diseases, such as: Diabetes, arthritis, cancer or heart disease.

REPRESENTATION OF A FREE RADICALS ATTACK



REPRESENTATION OF PROTECTION WITH ANTIOXIDANTS



WHAT ARE FREE RADICALS?

Free radicals are atoms or groups of atoms with an unpaired number of electrons. They are formed when oxygen interacts with certain molecules.

When these radicals are formed, highly reactive, a chain reaction is initiated, similar to dominoes.



The danger starts when they begin to interact with important parts, such as DNA or cell membrane. Because of this the cells can malfunction and even die.

The defence against free radicals is to consume antioxidants, molecules that can safely interact with free radicals and stop their chain reaction.

Kangen Water

Alkaline Water

Drinking Kangen Alkaline Water prevents the appearance of diseases and slows ageing process down

It provides essential minerals, promotes normal blood flow and keeps the pH value in blood, a value ranging from 7,365 (slightly alkaline).

Most food we consume create acid levels in our body, which unbalances the pH level in our blood. In order to rebalance our pH, our body acquires alkaline properties from different parts of our body, mainly bones and teeth. By drinking Alkaline Water, we help our bodies establish this balance. Alkaline Water is known to increase the hydration of the body and due to efficiency in the penetration of our cells. It helps neutralize acids and remove toxins from our body.

What is the cause of Ageing?

The cause of ageing is having an insufficient level of bicarbonates in our body.

INSUFFICIENT
AMOUNT
OF BICARBONATES



THE BODY DOES
NOT NEUTRALIZE ACIDS



CHOLESTEROL,
URIC ACID, ETC.

The main Function of Alkaline Water is to provide Bicarbonates to the body and neutralize Acids.

Its structural

Plate Micro Cluster

Kangen ionizers will have Titanium plates 100% covered in Platinum, changing the molecular structure present in tap water (12-15 molecules), transforming it into water with smaller clusters (5-6 molecules).

Through this process our body absorbs the properties of water in a more efficient way, increasing levels of hydration. The meshed plates used in the other ionizers on the market, fail to obtain this result.

WHAT MICROORGANISMS DO WE MANAGE TO ELIMINATE?

Bacteria, viruses, protozoa, cysts, fungi, algae, yeast, spores.

AND ELEMENTS SUCH AS:

Sulphur, silicon, chlorine, fluorine, chromium, copper, barium, mercury, arsenic and cadmium.

TAP WATER

VS

MICRO-CLUSTER WATER

Dehydration

Faster and better hydration

Damage due to Free radicals

Cleansing of Free radicals

Acidosis / Acidity in Blood

Eliminates body acidity



Group Tap water
(15 - 20 molecules)



Micro-clustered water
(5 - 6 molecules)



Kangen Water

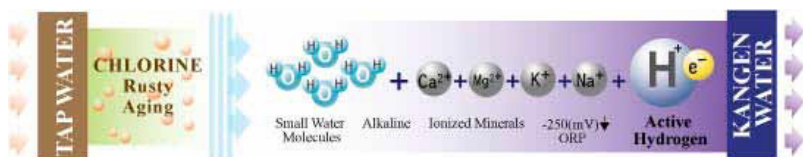
Active Water

The activated water is produced via electrolysis, a process by which water is decomposed into "alkaline" and "acidic". Because of this process, the water acquires totally different qualities, turning it into a preventive remedy for many diseases. Activated water, which is also known as "alkaline" and "acidic", increasingly has more application areas.

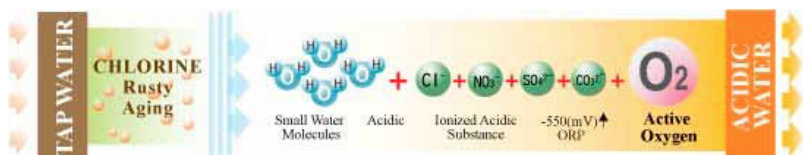
Activated Water contains active Hydrogen, and its high concentration leads to its healing power.

(Professor Shirahata)

PRODUCTION PROCESS FOR KANGEN WATER



PRODUCTION PROCESS FOR ACID WATER



"When the concentration of active hydrogen in the body is high, this reacts with active oxygen, turning it into clean water, which we will expel from the body."

(Professor Shirahata)

Active Hydrogen

Thanks to its powerful electrolysis camera, Go Plus Kangen Water ionizers produce a big amount of Active Hydrogen. Very beneficial to our health.

Active hydrogen reacts with active oxygen, which is the cause of many diseases. When the active hydrogen reacts with the active oxygen, water (H₂O) is generated.

Unlike Active Hydrogen, Active Oxygen is a strong oxidant that destroys the cells by oxidation.

Active Oxygen forms within our body when cells generate energy and we are very stressed.



Kangen Water

Its Benefits

Detoxifies the Intestine

“... A clean and healthy colon is one of the precursors for optimal health. The vast majority of body ailments and diseases are caused by having an acidic and dirty colon.” (Dr. Hiromi Shinya)

Its important for the colon to be clean. Animal protein, dairy products, alcohol, refined foods and saturated fats produce a sticky substance that adheres to the intestinal wall.

A barrier is formed, preventing the absorption of nutrients. Doctors say that having a contaminated intestine contributes to the development of many diseases and disabilities.

By consuming Kangen water, we can hydrate our body and clean our large

intestine in a few months. Infected bowel disease can be cured.

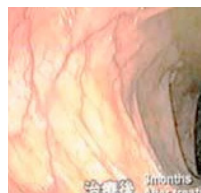
Lack of energy, obesity, nausea, various skin diseases can be improved with this cleansing.

In the market, we can find many cleaning products for the intestine. Many of them are expensive, and require a specific program, and can be painful. Drinking Kangen water cleanses the intestine in an efficient, safe and painless way by simply drinking water.

3 Months after Kangen Treatment



After



Before

During Pregnancy

It is likely that the mother will not even experience the usual morning sickness during pregnancy.

Drinking Kangen alkaline water provides the sufficient alkaline reserves a pregnant woman needs to ensure both the health of the baby and the mother.

To prevent nausea and promote the development of a healthy baby, the mother must consume large quantities of Kangen Alkaline water, both before and during pregnancy.

During early pregnancy, the mother's body loses a lot of alkaline minerals.

These minerals are provided by the mother for the construction of the placenta and to neutralize the acids poured into the foetus during the nine months of pregnancy.

This extraordinary need for alkalinity occurs while the mother sleeps. Collecting these alkaline minerals results in an increase in acidity in the female body, leading to common morning sickness.

The body of a pregnant woman locates the alkaline reserves found inside her body. If there are sufficient reserves to respond to the alkaline demands, the body will not have to look elsewhere for it, such as in teeth or bones.

With adequate alkaline reserves (i.e., a large supply of alkaline minerals acting as buffer in the blood), it is likely that the mother won't even have morning sickness during her pregnancy. Besides, the body will continue to use these reserves to neutralize the acid wastes coming from the baby during the months of pregnancy.





Eliminates Stored Fat

Normally a diet is full of acid elements. When there is an excess of acid, they can not be absorbed by the digestive system and so they are stored in the body, creating fat. Consuming Kangen water helps to remove acid, reducing the amount of stored fat.

This natural process, enables many people to finally lose weight thanks to the establishment of an internal balance. The pH is an important parameter in the body, to which we do not pay enough attention. Many people already have an extremely low pH, or what is the same, acid pH.

This is the reason why the presence of this acidosis, favours the development of many important diseases, such as cancer, diabetes, hypertension, obesity ...

Kangen water can turn into your diet, your diet to lose weight and achieve a healthy lifestyle.

You will not need a special diet if you drink it. During this process, your appetite will decrease. You will consume less acid food and your energy will increase.

RESEARCH Known facts

The Ministry of Health, Labour and Welfare (Japan) recognized the following benefits of Kangen Water:

It inhibits the abnormal fermentation of the digestive tract.

- It prevents chronic diarrhoea.
- It relieves digestive disorders
- It relieves the excess of stomach acid.

NUMEROUS SCIENTIFIC STUDIES

Many physicists have spoken on television or in newspapers about the benefits of Kangen Water to combat lifestyle-related diseases, cancer, diabetes and dermatitis. The following are some of the uses of Kangen Water as a medicinal treatment which have been shown on television in recent years:

1. Kangen Water was used to help relieve lower extremity gangrene caused by diabetes.
2. Kangen Water relieves severe cases of atopic dermatitis.
3. The cancer begins to decline after the patient starts taking Kangen Water.

Many hospitals are already using Kangen Water as part of their therapy. In turn, many studies are being carried out indicating the benefits of a treatment with this water.

Among the hospitals that are already using Kangen Water as part of their therapy, we can find: Kyowa Hospital (Hyogo), Kitari Institute- Medicinal Cebtre, Hospital de la Universidad de Showa, Kanto Teishin Hospital, Meiseki Hospital, Nara Hospital- Medicine College, Iida Hospital-Nagano, Women's Hospital-Tokio, Hamabatake Hospital (Kagoshima).

Although numerous Alkaline Water equipment are being sold, only a few have been certified to be used in Hospitals by the Ministry of Health, Labour and Welfare. Clinical experience has shown, according to research, that Kangen Water has improved certain conditions of patients who could not respond to drug treatment, including lipid metabolism, hypertension, disorders, asthma, kidney disease, digestive disorders and liver. Furthermore media reports indicate that a professor from Kyushu Shirabatake University has tested and concluded that Kangen Water inhibits the replication of cancer cells.

Kangen Water *In Sports*

The presence of Cortisol in the blood affects acidity, lowering the pH of our blood. Having a low pH causes the secretion of the catabolic hormone, an enemy of every athlete, destroying muscle mass.

According to several studies, trying extreme protein diets (those whose main macro-nutrient is protein, especially those that use more meat than fish), elevate cortisol levels and decrease the pH of the blood.

Drinking Kangen Alkaline Water® helps your body establish a healthy pH balance (7,365), being "Slightly Alkaline". It is important to maintain the pH level of our body "slightly alkaline" to facilitate protein synthesis, the proper functioning of the hormone system. It also facilitates recovery and maximizes performance.

When there is an imbalance of the pH of our body, the body will try to recover naturally, regardless of the circumstances, seeking mineral supplies, mainly: Calcium, Carbonate and Magnesium.

In this way the body will balance your pH and keep it "slightly alkaline." It is important to note that these minerals are mainly extracted from bones and teeth, resulting in their subsequent weakening.



Kangen Water in Olympic Sport

In the last decade, in major global training centres for elite Olympic Games athletes: The "Palacio Oval Deportivo de Calgary," "The Pacific Institute for Sport Excellence in Vancouver and the Performance Centre for the Olympic Hockey Team in Canada,

among the most prominent institutions, have been implemented hydration Ionized Alkaline Kangen® Water consumption programs in their training plans, in order to obtain higher performance.

IT HYDRATES YOUR BODY, HELPS YOU REJUVENATE, PROTECTS YOU FROM DISEASE, GIVES ENERGY AND HELPS YOU LOSE WEIGHT, AMONG MANY OTHER ADVANTAGES.

The Effects of Kangen Water

Drinking Kangen water helps with the movement, performance and flexibility of muscles. When you breathe, or contract your muscles, your body produces lactic acid and pyruvic acid.

When these acids are present in the muscle, we feel a burning sensation that weakens the muscles, resulting in tired muscles that do not efficiently respond. The more you drink Kangen water, the sooner you can eliminate these acids present in muscle tissue. It will recover faster and reduce muscle micro-scars. Your muscle will regain its strength. Kangen alkaline water neutralizes the acid metabolic wastes very quickly, reducing the likelihood of injury.

Athletes and coaches know that small changes in pH can seriously affect athletic performance. The reason is that the muscles provide better results at a certain pH level.

When the pH drops after exercise, the body is balanced and returns to a neutral pH level. To do this, they feed on minerals like calcium and magnesium.

For this reason, athletes should daily consume it, and thus prevent muscle cramps. By using Kangen water before and after sports, your body does not need to obtain calcium or magnesium.



The ionizers

5 Types of Water

SUPER ALKALINE PH 11,5 NON POTABLE

Powerful cleaning effect. It favours solvent properties and heat conduction. Below, find out what Kangen Water can do for you:

Food preparation: Eliminate the rawness of vegetables such as onions, carrots, etc. with super Alkaline Kangen Water. Cleaning: Keep cutting boards and tea towels clean.

It is good for removing oil and grease from the kitchen extractor and the general cleaning of the kitchen.

Remove spots: The extra strong absorbency power easily removes stains from coffee, soy sauce and oil. Also removes stains from the toilet.

Dishwashing: Use less detergent when washing dishes. Save water costs, since it requires only a third of the amount of water for rinsing.

ALKALINE KANGEN PH 8,5 - 9,5 POTABLE

Perfect for drinking and cooking healthily. It causes the body to regain a more alkaline state, optimizing health. Below, find out what Kangen Water can do for you:

Drinking Kangen water: Drink Kangen Water during the day. Unlike tap water, there is no unpleasant odour, it is lighter and has a pleasant sweet taste.

Vegetable preparation: Wash vegetables and fish. Enhance the flavour of broccoli, onions, etc. pre-boiling them with Kangen Water. Use less seasoning and salt.

Coffee and tea: You can use less coffee or tea with Kangen Water, obtaining a full and rich flavour thanks to the water's extraction ability. Plants: Kangen water retrieves the freshness and greenness of your plants. It stimulates germination and improves seedling development.

CLEAN WATER PH 7,0 POTABLE

Free of chlorine, oxide and opacity. Neutral Water is delicious to drink:

Food for babies: Use Neutral Water with a pH of 7,0 when you prepare food for your baby.

Medication: Neutral Water is delicious to drink and will be easily absorbed by your body. Take your medicine with this water.

AGUA BEAUTY PH 4,0 - 6,0 NON POTABLE

This slightly acidic water is recognized for its astringent effects. It is great for gentle cleansing and beauty care:

Facial cleansing: The astringent properties of acidic water are effective in toning and firming facial skin. It also works as an after shave tonic.

Hair care: Use this water instead of conditioner after shampooing. It reduces tangles and leaves your hair shiny.

Animal care: Spray your pet with Acid Water and brush it to get for a soft and shiny hair.

Grooming: brightener: When polishing mirrors, monocles, glass objects and windows you get a great shine. It clean wooden floors, tiles etc. leaving no sticky residue.

AGUA SÚPER ÁCIDA PH 2,5 NON POTABLE

It preserves the hygiene of your everyday life, thanks to its powerful cleaning effect. It favours solvent properties and heat conduction.

Clean and disinfect: Sanitize knives, cutting boards and kitchen towels. Clean and disinfect your kitchen, to avoid it becoming a breeding ground for germs.

Hygiene: Disinfect your hands, your toothbrush and use as mouthwash. Keep a bottle with diffuser in your bathroom for easy access.

Itchy throat: If you have throat discomfort, gargle with Super Acid Water to relieve the discomfort. You will notice the discomfort disappears.

Super acid water also applies to skin care treatments. (See following pages TREATMENTS)

5 Types of Water

Different uses

TINEA PEDIS

Soak your feet in SUPER ACID WATER with pH 2.5 between 15 to 20 minutes to treat athlete's foot and fungus in nails and feet. The oxidation powers of such water helps soothe the burning and itching in the eliminating of the fungus.



MOUTH DISINFECTION

One advantage of SUPER ACID WATER pH 2.5 is focused on oral disinfection. Rinse after brushing, and even if you notice any oral discomfort. It will have a soothing effect..

TREAT: SUNBURN

If the burn is not serious enough to see a doctor, spray the affected area with ALKALINE WATER pH 11.5 or soak a cloth with it and apply it on the burned area. You should let the water dry before putting your clothes on. You can repeat this process if you wish. For best results, drink 30 ml for every of KANGEN WATER pH 8.5 to 9.5



TIPS KANGEN WATER PH 8,5 - 9,5

DIGESTIVE FUNCTION:

Drink at least two litres of water a day for cases of excessive heartburn, chronic diarrhoea, digestive problems and gastrointestinal abnormal fermentation.

CALCIUM

Drinking Kangen Water continuously acts as a calcium supplement. Your children will grow up strong and healthy.

OTHER BENEFITS

It prevents ageing and stabilises body temperature. Several investigations by medical laboratories indicate significant benefits to treat diabetes, hepatitis, atopic dermatitis, hypertension, gastric ulcers, athlete's foot, and other medical conditions.



PSORIASIS SKIN TANKS

The following recommendations depend on the severity of the outbreaks that arise. Treatments tested.

FOR MINOR OUTBREAKS

Excellent results have been obtained only by spraying the affected area with pH 6,0 BEAUTY 3 to 6 times a day, letting the area dry.

FOR MAJOR OUTBREAKS

1. Spray the area with SUPER ACID WATER pH 2.5 and let it air dry.
2. Once it is completely dry, apply a cloth soaked with SUPER ALKALINE WATER pH 11.5 for at least 5 minutes. This will help the body neutralize the acids that cause outbreaks.
3. Dry the area and spray with pH 6,0 BEAUTY and let it dry. Repeat this process at least 3 times a day.
4. For this process we recommend to spray the area with pH 6,0 BEAUTY at least once every 2 hours. For best results, drink 30 ml of KANGEN WATER pH 8.5 - 9.5 per kilo.

KANGEN IN THE KITCHEN

SUPER ALKALINE (pH 11.5)

Soak the fish or chicken for 10 to 15 minutes.

KANGEN WATER (pH 8,5 - 9,5)

Used for cooking potatoes, cereals, dried beans or peas, pasta, etc. To increase their taste and alkalinity.

SUPER ALKALINE (pH 11.5)

Add a tablespoon to the salad dressing to keep the oil emulsified.

SUPER ALKALINE (pH 11.5)

Soak your fruits and vegetables in a bowl for 20 minutes or so, to eliminate pesticides and enhance their flavour.

SUPER ALKALINE (pH 11.5)

Soak dried beans and peas for 1 hour to accelerate the process.

KANGEN WATER (pH 8,5 - 9,5)

Used for cooking broth with a maximum extract of vitamins and minerals from vegetables and meat.



KANGEN WATER (pH 8,5 - 9,5)

When cooking with this type of water, you do not need to add a lot of spices such as: salt, stock cube, pepper...

OTHER USES

KANGEN WATER (pH 8,5 - 9,5)

For the preparation of coffee and tea. It improves taste, colour and nutritional value.

SUPER ALKALINE (pH 11.5)

Soak your feet for 20 minutes, one or more times a week, to help your body in the detoxification process.

BEAUTY WATER (pH 6,0)

To clean tiled or hardwood. It adds shine

TREATMENT FOR CLOTHING

SUPER ALKALINE (pH 11.5)

- A. Soak clothes with grease stains to remove the stain.
- B. Add 1 litre per kilo of clothes instead of detergent.
- C. For colouring dark clothes.

SUPER ACID (pH 2,5)

Removes stains from clothes without damaging the dark colour.



TREATMENT OF PLANTS

SUPER ALKALINE (pH 11.5)

Acceleration of seed germination.

KANGEN WATER (pH 8,5 - 9,5)

Used in sick plants in vases of water to prolong their fresh appearance.

BEAUTY WATER (pH 6,0)

Spray on their leaves to provide brightness and accelerate their growth.

SUPER ACID (pH 2,5)

Use 3 times a week during the growing season for vigorous growth and more flowers.



KANGEN WATER AND PETS

BEAUTY WATER (pH 6,0)

Bathe your pet with this water and help it have a more shiny hair.

KANGEN WATER (pH 8,5 - 9,5)

Pets can also drink Alkaline Kangen Water® with pH 8,5. It helps prevent disease and provide greater hydration.

Kangen Water Experience

Dr. Dave Carpenter



AN EFFECTIVE ANTI-INFLAMMATORY: WATER PH 11.5

"As an anti-inflammatory, Super Alkaline Water relieves sprains, strains and muscle aches. Any condition where there is pain is caused by inflammation. A man broke his ankle, which caused him a heavy inflammation. In the hospital he was stabilized and had his ankle dressed. He was also scheduled for surgery in three days. When he got home, his ankle was soaked in SUPER ALKALINE WATER PH 11.5, reducing inflammation (and pain) 30 minutes later. The day after surgery, the ankle showed

no swelling, most of the bruises had disappeared except for a small discolouration directly on the worst rupture. The surgery was scheduled to last about three hours, nevertheless, it took only 45 minutes. The surgeon explained that such brevity was due to the lack of inflammation, totally unexpected by the surgeon based on the patient's condition three days earlier. The bone also healed in half the time due to the consumption of Kangen Water® " (Dr Carpenter)

SUPER WATER ACID (PH2,5) FOR THE SIGHT

"Based on years of research and observation, we concluded that the acidification of the body is the underlying cause of all diseases.

This is because many people lead a diet mainly composed of acidforming foods (i.e., sugar, meats, dairy products, yeast breads, coffee, alcohol, starch, etc.) rather than vegetables."

"In my experience, Kangen Water favours your nutritional program better than anything else. Water is the key and Kangen Water® is the best water I know. Anyone trying it will feel it in his own health, no doubt! "

"SUPER ACID WATER pH 2,5 is capable of removing cold sores, canker sores and sties in the eyes. It has been used as a treatment for conjunctivitis, and the condition improved within hours. " (Dr Carpenter)

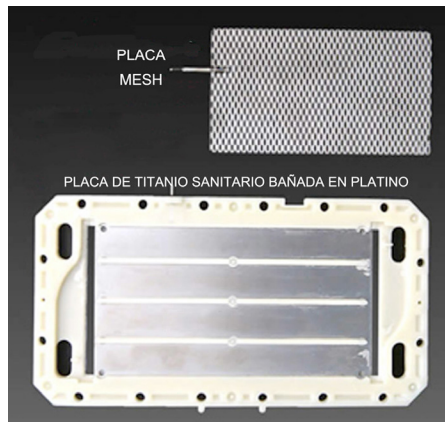
"It was used to treat a parasitic eye infection that had resisted conventional treatments with antibiotics for three years. The threeday treatment with SUPER ACID WATER pH 2,5 resulted in the disappearance of the parasitic infection in the eye. " (Dr Carpenter)

"One man was exposed to a chemical product in his workplace that caused pain and blurred vision to the point where he could not see. He was treated by his doctor for a week with drugs and the patient found no relief. When SUPER ACID WATER pH 2,5 was sprayed in his eyes, the pain and blurred vision disappeared 30 minutes later. " (Dr Carpenter)



The Ionizers

OUR IONIZERS HAVE SANITARY TITANIUM PLATES
100% COATED IN PLATINUM



Kangen Water ionizers are designed to filter tap water directly, thanks to its easy installation.

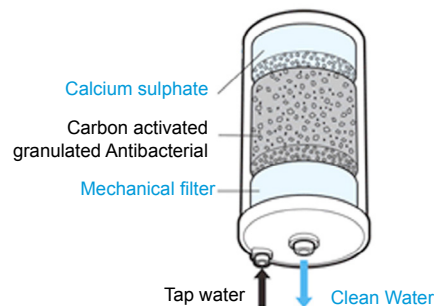
When tap water comes into contact with titanium plates 100% coated in platinum 100% a process known as "electrolysis" occurs. A process which results in the production of 5 different types of water.

The use of whole plates guarantees their long duration, preventing the deposition of lime, which destroys ionizers with Mesh plates in a few months..

Ionizers: Filter GO

WHAT ARE GO IONIZERS MADE OF?

They have a filter inside which will be replaced about once a year. It's easy to replace, you can do it yourself from home.

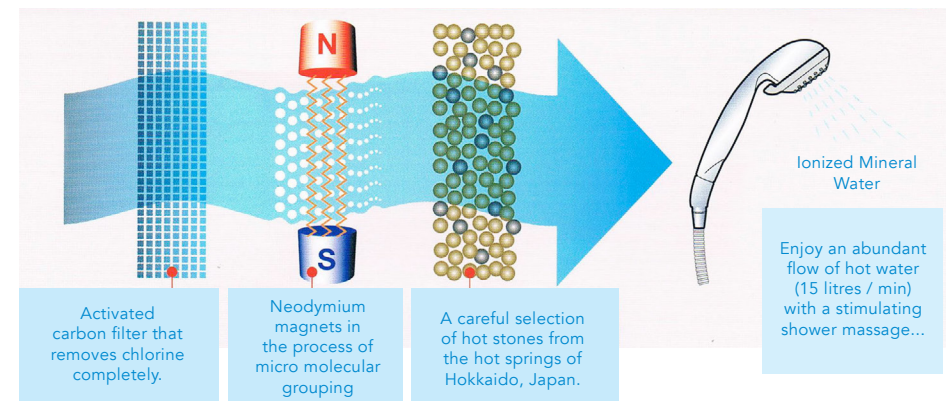


Certified Ionizers

Kangen ionizers are the only ones who have Medical Certification for their use in hospitals in the US and Japan.



Ionizers: Filter GO



Different Models

Ionizers

GO R

THE LITTLE ONE

GO R ionizer is intended for single or couple use. Its electrolysis camera has titanium plates 100% coated in Platinum. It has an LCD screen that helps us choose the type of water we consume.

As you can see in the picture, it has a modern exterior design, in silvery tones, that fits with modern kitchens.

It produces only 3 different types of water [Alkaline Water, Neutral and Beauty].

3 TYPES OF WATER

- Kangen water (8.5 - 9.5 pH) Water
- Purified / Neutral (7.0pH)
- Acidic Water (Beauty) (4.0 - 6.0)



SIZE

24 cm (width) x 28 cm (high)
x 11 cm (depth)

3 YEARS WARRANTY

No additional costs or restrictions for the quality of main water network or the amount of Kangen Water produced daily. Such a guarantee is not offered by any other ionizer's manufacturer.

GO JR II

IDEAL FOR 2-4 PEOPLE

GO JR II has three solid electrode plates that reduce energy consumption. Thanks to the solid titanium plates 100% platinum coated, this unit can produce KANGEN® strong water: Super Alkaline Water (pH 11,5) and Super Acid Water (pH 2,5).

Due to lower energy consumption and fewer plates, this machine is only recommended for families of 2 to 3 people.

For a larger family, you should consider more robust models such as "GO SD501" or "GO SD501 PLATINUM" due to the larger amount of water that will be consumed.

GO JR II model has the same size and weight as models GO SD501 and GO SD501 PLATINUM. The installation to the tap water is the same and it also produces 5 different types of water:

5 TYPES OF WATER

- Strong Alkaline water (11.5 pH)
- Kangen water (8.5 - 9.5 pH)
- Purified / Neutral Water (7.0pH)
- Acidic Water (Beauty) (4.0 - 6.0)
- Strong Acid water (2.5 pH)



SIZE

24 cm (width) x 28 cm (high)
x 15 cm (depth)

3 YEARS WARRANTY

No additional costs or restrictions for the quality of main water network or the amount of Kangen Water produced daily. Such a guarantee is not offered by any other ionizer's manufacturer.

MORE DETAILS

The model GO JR II does not emit voice messages. However, like the top-end models, thanks to its LCD screen you can control the amount of water you will consume, when to change the filter, etc ...



GO SD501

NO. 1 WORLDWIDE

SIZE

26 cm (width) x 28 cm (high)
x 17 cm (depth)

5 YEARS WARRANTY

No additional costs or restrictions for the quality of main water network or the amount of Kangen Water produced daily. Such a guarantee is not offered by any other ionizer's manufacturer.

5 TYPES OF WATER

- Strong Alkaline water (11.5 pH)
- Kangen water (8.5 - 9.5 pH)
- Purified / Neutral Water (7.0pH)
- Acidic Water (Beauty) (4.0 - 6.0)
- Strong Acid water (2.5 pH)

GO SD501 is the finest machine in its class, with the best integrated electrolysis chamber that exists in the market. This Kangen water filtration device generates a continuous stream of 5 types of water to be used in different ways at home. It emits voice messages in English.

GO SD501 is the finest machine in its class, with the best integrated electrolysis chamber that exists in the market. This Kangen water filtration device generates a continuous stream of 5 types of water to be used in different ways at home. It can be easily operated thanks to its large LCD display and voice messages. When you need delicious, healthy and alkaline water to hydrate a whole family, GO SD501 is the product I was looking for!

Being a more compact and easy to use design, the GO SD501 has 7 titanium plates that secure its power. GO SD501's electrolytic cell is powerful and compact and comes equipped with seven electrode plates. KANGEN WATER is produced by an electrolysis chamber with a high amount of hydroxide ions (OH, positive ions) such as calcium and hydrogen ions. It incorporates a compartment for the electrolysis function's reinforcer liquid. As a result, it is possible to produce "Strong Acid Water" (pH 2.7) and "Strong Kangen Water" (pH 11.0). By injecting the electrolysis enhancer (0.93 pt), the machine approximately produces 8 gallons of "Strong Acid Water" in almost 30 minutes, depending on water quality.



GO SD501

PLATINUM

SIZE

26 cm (width) x 28 cm (high)
x 17 cm (depth)

5 YEARS WARRANTY

No additional costs or restrictions for the quality of main water network or the amount of Kangen Water produced daily. Such a guarantee is not offered by any other ionizer's manufacturer.

5 TYPES OF WATER

- Strong Alkaline water (11.5 pH)
- Kangen water (8.5 - 9.5 pH)
- Purified / Neutral Water (7.0pH)
- Acidic Water (Beauty) (4.0 - 6.0)
- Strong Acid water (2.5 pH)

The new GO SD501 PLATINUM stands out due to its modern design that blends with current stylish kitchens. With the same power and performance as GO SD501 but with a more innovative design. It emits voice messages in 5 languages: Spanish, French, Italian and German) Being the leader in the continuous electrolytic ionized water generating systems sector, GO SD501 PLATINUM is the finest ionizer of its kind. It incorporated the most powerful electrolysis chamber available. Its large LCD screen and clear voice prompts make GO SD501 PLATINUM stand out among other ionizers.

Being a more compact and easy to use design, the GO SD501 has 7 titanium plates that secure its power. GO SD501's electrolytic cell is powerful and compact and comes equipped with seven electrode plates.

KANGEN WATER is produced by an electrolysis chamber with a high amount of hydroxide ions (OH, positive ions) such as calcium and hydrogen ions. It incorporates a compartment for the electrolysis function's reinforcer liquid. As a result, it is possible to produce "Strong Acid Water" (pH 2.7) and "Strong Kangen Water" (pH 11.0). By injecting the electrolysis enhancer (0.93 pt), the machine approximately produces 8 gallons of "Strong Acid Water" in almost 30 minutes, depending on water quality.

GO K8

MAXIMUM POWER

The new GO K8 model has been designed to provide the biggest antioxidant power in the market. It increases ORP levels up to 10% thanks to its 8 Health titanium plates 100% coated in platinum.

You will be able to enjoy your device anywhere, thanks to its multi-voltage power supply (110 V, 120 V, 220 V, 240 V ... etc.) with interchangeable plugs (sold separately).

Thanks to the system that incorporates an "on-off" function, we save up to 30% more energy than other ionizers. The machine will automatically turn off after 10 minutes if it is not being used. It will be reactivated only by opening the tap again.

The only ionizer in the range that features a touch screen with a similar size to the iPhone 5. You will be able to choose the water you want to consume just pressing a button.

Provides voice and visual messages in 8 different languages (English, Spanish, German, French, Italian, Portuguese, Japanese and Chinese)

The GO K8 model features an automatic cleaning system, with a filter that includes an automatic memory, notifying the user about the change after 5687 litres.



SIZE

34 (width) x 28 (height) x 15 (depth)

5 YEARS WARRANTY

No additional costs or restrictions for the quality of main water network or the amount of Kangen Water produced daily. Such a guarantee is not offered by any other ionizer's manufacturer.

5 TYPES OF WATER

- Strong Alkaline water (11.5 pH)
- Kangen water (8.5 - 9.5 pH)
- Purified / Neutral Water (7.0pH)
- Acidic Water (Beauty) (4.0 - 6.0)
- Strong Acid water (2.5 pH)



GO SUPER501

THE LARGE FAMILY UNIT

SIZE

34 cm (width) x 38 cm (height)
x 27 cm (depth)

3 YEARS WARRANTY

No additional costs or restrictions for the quality of main water network or the amount of Kangen Water produced daily. Such a guarantee is not offered by any other ionizer's manufacturer.

5 TYPES OF WATER

- Strong Alkaline water (11.5 pH)
- Kangen water (8.5 - 9.5 pH)
- Purified / Neutral Water (7.0pH)
- Acidic Water (Beauty) (4.0 - 6.0)
- Strong Acid water (2.5 pH)



GO SD501U

THE UNIT UNDER THE COUNTER

Enjoy the quality and power of the GO SD501 right at your kitchen sink - without sacrificing valuable counter space! Simple to operate with the fully featured compact LCD wall-mounted control panel!

AC 100V, 50/60Hz (grounded) Complete with 1 High-grade filter (HG or HG-N), 1 cleaning cartridge, Electrolysis Enhancer, diverters and product literature.

SIZE

20 cm (width) x 9 cm (height)
x 3,5 cm (depth)

5 YEARS WARRANTY

No additional costs or restrictions for the quality of main water network or the amount of Kangen Water produced daily. Such a guarantee is not offered by any other ionizer's manufacturer.

5 TYPES OF WATER

- Strong Alkaline water (11.5 pH)
- Kangen water (8.5 - 9.5 pH)
- Purified / Neutral Water (7.0pH)
- Acidic Water (Beauty) (4.0 - 6.0)
- Strong Acid water (2.5 pH)



GO SPA

YOUR HOME SPA SYSTEM

The GO SPA removes chlorine from your shower and bath water. Its dual cartridge system contains therapeutic ingredients that have a relaxing hot spring effect. The water is broken down into smaller clusters which makes it easier for your body to absorb the healthy and clean GO SPA water.

The GO SPA contains a blend of natural hot spring ingredients and minerals that makes the water slightly alkaline and very relaxing!

Tufa: A mineral stone taken directly from the Futamata Radium Hot spring in Hokkaido, Japan. This stone gives the water the same gentle and relaxing effect of a hot spring.

MIC stone: Generates activated mildly alkaline water which is good for your skin.

Power stone: Generates strong negative-ions.

3 YEARS WARRANTY

No additional costs or restrictions for the quality of main water network or the amount of Kangen Water produced daily. Such a guarantee is not offered by any other ionizer's manufacturer.

TYPES OF WATER

It contains a blend of natural ingredients, hot springs and minerals, which will give you a sense of enjoyment similar to the one you can find in a spa. It contains carefully selected ingredients to bring benefits to the skin, such as the tuff collected from the Futamata Mountains in Hokkaido, Japan.

ENSURE THE REMOVALS OF RESIDUAL CHLORINE IN THE SHOWER

Chlorine is a disinfectant that we add to tap water to kill harmful microorganisms. Chlorine is absorbed by our skin while showering. A US study shows that the amount of chlorine absorbed by our body during a bath or shower for 15 minutes is the equivalent of drinking 1 litre of tap water with chlorine.

Moreover, at a temperature of about 40°C the skin absorbs chlorine easily. Our Kangen water filters produce adequate water for baths and showers, completely removing residual chlorine and bacteria from tap water. It has a double cartridge purification system. (See page 31)



Contains a mixture of natural ingredients, hot springs and minerals, which will give a sense of enjoyment similar to what you may feel at a spa.

Contains carefully selected ingredients to benefit your skin, such as the tuff collected from the mountains of Futamata in Hokkaido, Japan.

Sit back, relax and enjoy the natural minerals that cascade throughout the bathroom, providing a warm and relaxing atmosphere. The water produced is slightly alkaline. Water charged with negative ions. Enjoy the benefits of the shower ionizer on a daily basis. You won't want to get away from it.

PROTECT YOUR HAIR FROM CHLORINE

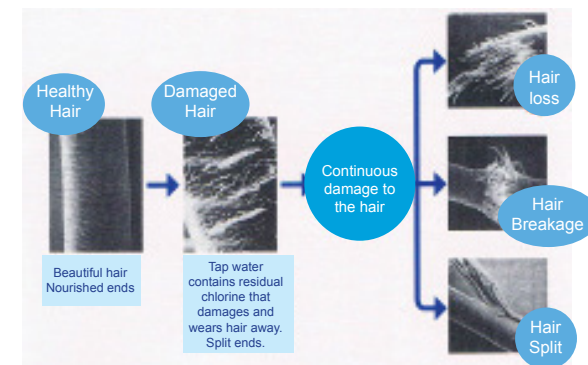
Residual chlorine in tap water causes all kinds of hair damage such as split ends and discolouration. This is because hydrolysed proteins combine with chlorine and pull moisture from your hair.

Residual chlorine becomes highly active with hot water, causing even more damage to your hair and scalp.

Ionized mineral water is wonderfully appropriate for a healthy and silky hair. The negative ions generated by the capsules are effectively preserve your hair, also being suitable for advanced cases of hair damaged by dyes and perms.



DAMAGED HAIR TAP WATER



HIGHLY EFFECTIVE AGAINST AGEING, SKIN DISEASES AND FRECKLES

Chlorine is the greatest enemy of the skin.

When the skin absorbs this substance, it forms chlorine oxides which are then combined with skin fat molecules, generating pigmentation and freckles.

BENEFITS

It produces water that acts effectively against rashes, dry skin, circulation problems, eczema, frost-bite, bruises and sprains, stiff shoulders, nerve pain, rheumatism, recovery from fatigue, haemorrhoids, back pain, insomnia and atrophy.

ITS PROPERTIES

Effective minerals with antibacterial calcium ion properties, controlling the growth of bacteria such as Staphylococcus aureus and reducing the symptoms of atofia.

Table of Prices



GO SD501U

7.999 €

(Taxes included)



GO SUPER 501

6.499 €

(Taxes included)



GO SD501

3.342,20 €

(Taxes included)



GO JR11

2.033,20 €

(Taxes included)



GO K8

4.399,40 €

(Taxes included)



GO SD501 PLATINUM

3.604 €

(Taxes included)



GO R

1.438,20 €

(Taxes included)



GO SPA

1.438,20 €

(Taxes included)

(Taxes and shipping costs included)



PURE WATER UNDOUBTEDLY
PROVIDES A BETTER QUALITY
OF WATER.

We believe that clean water and a healthy environment are the most important components to a healthy life and general well-being.

Our only goal is to provide water filtration products of great quality and the best in its class so that in each home you can enjoy healthy water and great taste.

BETTER QUALITY OF WATER.
BETTER FOR THE ENVIRONMENT

Changing from bottled water to filtered water at home is one of the fastest and easiest steps and most impressive for a healthy life, saving money and protecting the planet. The wide range of solutions of filtered water in the home that pure water provides, also offers really reasonable alternatives to the water in disposable plastic bottles, producing less waste and providing healthier water of great quality and better taste.

*Pure water
Purifiers*

GO EQ-600 Water filters for the entire house.

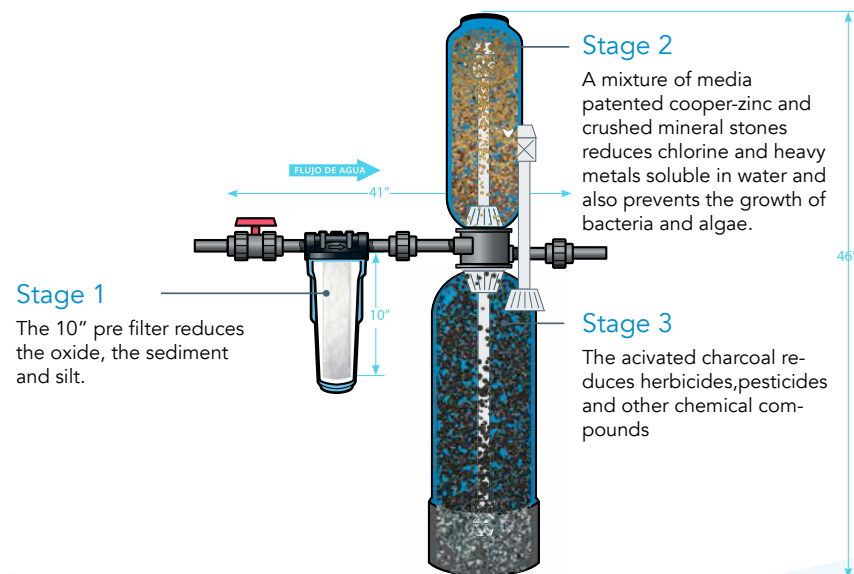


Water filtration of high performance and duration all over the house, great taste and great for your health.

Features and Benefits

- The whole system is certified by NSF International to effectively remove up 97% of chlorine.
- High power means certified by NSF which also reduces pesticides, herbicides, oxide, metals soluble in water and industrial solvents.
- Provides healthy water, without odour and great taste.
- Extends the life of the pipes and electrical appliances in the house, reducing harmful sediment and sediment buildup.
- Does not require electricity, drainage system or self-cleaning process or create waste water.
- Tanks of easy installation and replacement, which have a duration of 6 years or 600,000 gallons.
- Provides a most healthful shower experience that favours you and you get a smoother skin and your hair gets more shiny and silky.
- Improves air quality by reducing vaporised volatile organic compounds produced by chemicals.

Complete equipment: 1.142,85 €

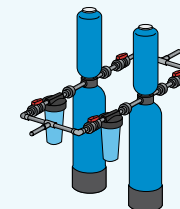


Specifications

Model: GO EQ-600 (for pipes of ¾")
Model: GO EQ-601 (for pipes of 1")
Replacement filters:
Main Tanks: GO EQ-600R
Pre-filter: GO EQ-PFC.10
Flow of classified service: 7 gpm
Maximum working pressure: 20-100 psi
Maximum operating temperature: 40-90° F
Recommended capacity: 600,000 gallons



Upgrade your system with our INSTALLATION KIT OF PROFESSIONAL QUALITY.



A dual manifold system is available for broader houses with 3 -4 bathrooms. The installation Kits are available in:
 GO EQ-300-MFLD (for pipes of ¾")
 GO EQ -301-MFLD (for pipes of 1")

Pure Satisfaction

All Agua Pura products offer a 100% satisfaction guarantee for 90 days. This filtration system is designed and tested to use with genuine Agua Pura spare parts, including spare part filters and all the hardware. The use of spare parts from other manufacturers could result in a loss in the reduction of pollutants, damage to the system or failure and will void its guarantee.

GO EQ-WELL-UV Well water filter for the whole house.

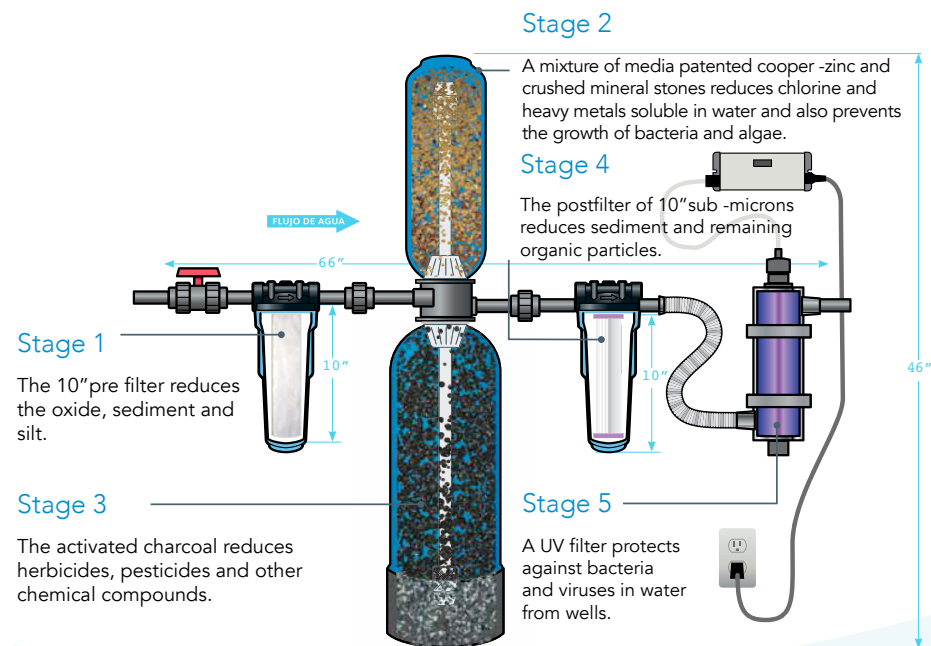


Water filtration of high performance and duration all over the house, great taste, odour free and free of rust, bacteria and other contaminants.

Features and benefits

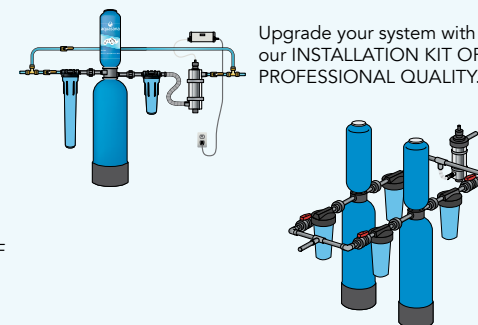
- The whole system is certified by NSF International to effectively remove up to 97% of chlorine and also reduces several harmful contaminants including pesticides, herbicides, oxide, metals soluble in water and industrial solvents.
- With a high performance UV filter that protects you from bacteria and viruses regularly present in water from wells
- Provides healthy water without odour and great taste in all the house.
- Protects and extends the life of pipes and electrical appliances.
- Does not produce waste water or requires drainage or self-cleaning process.
- Improves air quality by reducing volatile organic compounds produced by the vapourised chemicals.
- Provides a most healthy shower experience that favours you and you get a smoother skin and your hair gets more shiny and silky.
- Tanks of easy installation and replacement which have a duration of 5 years or 500,000 gallons.

Complete equipment: 2.350,00 €



Specifications

Model: GO EQ-WELL-UV
Main tanks: GO EQ-WELL-R
Bulb: GO UV-AQ-UV-STD-LAMP
Pre filter: GO EQ-PFC.10
Post filter: GO EQ-PFC.35
Flow of classified service: 7 gpm
Maximum working pressure: 20-100 psi
Maximum operating temperature: 40-90° F
Recommended capacity: 600,000 gallons



Upgrade your system with our INSTALLATION KIT OF PROFESSIONAL QUALITY.

A dual manifold system is available for broader houses with 3-4 bathrooms. The installation kits are available in GO EQ-300-MFLD.

Pure Satisfaction

All Agua Pura products offer a 100% satisfaction guarantee for 90 days. This filtration system is designed and tested to use with genuine Agua Pura spare parts, including spare parts filters and all the hardware. The use of spare parts from other manufacturers could result in a loss in the reduction of pollutants, damage to the system or failure and will void its guarantee.

GO Rhino EQ-1000 Premium filter for the entire house.

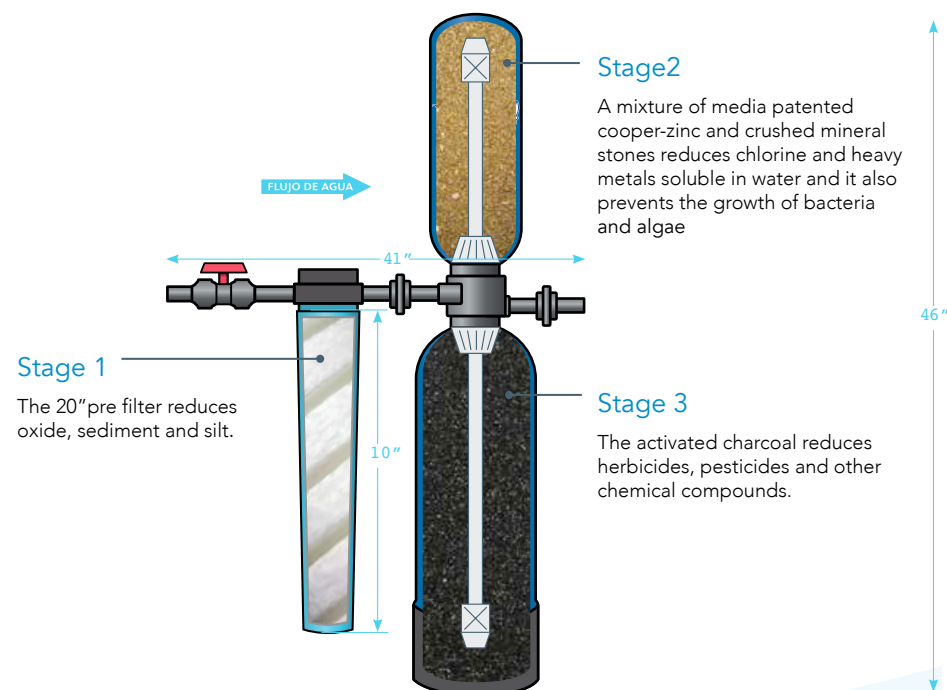


Water filtration of high performance and duration all over the house, great taste for 1 million gallons or 10 years.

Features and Benefits

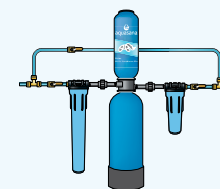
- Enjoy healthy, clean water with great taste in any part of your house.
- With 10 years of life or 1,000,000 gallons of capacity.
- Premium updates includes a larger sediment pre filter and a means of upgrading capacity by a million gallons and a total guarantee of 10 years.
- The whole system is certified by NSF to effectively remove up to 97% of chlorine and also reduces several harmful contaminants including: pesticides, herbicides, oxide, metals soluble in water and industrial solvents.
- Does not require electricity, drainage or self-cleaning process and does not produce waste water.
- Easy installation of spare parts for tanks with very little or no maintenance.
- Improves air quality by reducing volatile organic compounds produced by chemicals.
- Provides a most healthy shower experience and you get a smoother skin and shiny, silky hair.

Complete equipment: 2.550,00 €



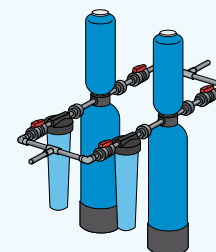
Specifications

Model: GO EQ-1000 (for pipes of ¾")
Model: GO EQ-1000 (for pipes of 1")
Main tanks: GO EQ-1000R
Pre filter: GO EQ-PFC.20
Post filter: GO EQ-PFC-35
Flow of classified service: 7 gpm
Maximum working pressure: 20-100 psi
Maximum operating temperature: 40-90° F
Recommended capacity: 1,000,000 gallons



Upgrade your system with our **INSTALLATION KIT OF PROFESSIONAL QUALITY.**

A dual manifold system is available for broader houses with 3-4 bathrooms. The installation kits are available in:
 GO EQ-300-MFLD (for pipes of ¾")
 GO EQ-301-MFLD (for pipes of 1")



Pure Satisfaction

All Agua Pura products offer a 100% satisfaction guarantee for 90 days. This filtration system is designed and tested to use with genuine Agua Pura spare parts, including spare parts filters and all the hardware. The use of spare parts from other manufacturers could result in a loss in the reduction of pollutants, damage to the system or failure and will void its guarantee.

GO SimplySoft EQ-AST-WH Salt free softener for the entire house.

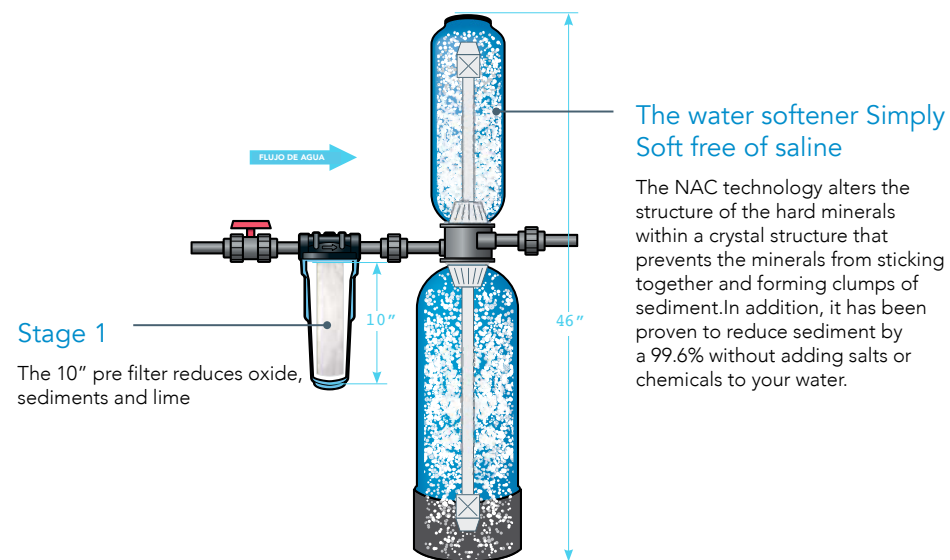


Effective and eco-friendly prevention of sediment for the whole house without using saline or chemical abrasives.

Features and Benefits

- The GO DVGW W-512 has been tested and has shown in a 99.6% that prevents sediment.
- Set the soft water up and, of course, reduces the adverse effects of corrosion and sediment (accumulation of hard minerals)
- Protects and extends the life of your electrical appliances and pipes.
- Long life softener 6 years
- Easy to maintain and replace -all the problems with heavy bags of salt are gone.
- Do not eliminate the minerals in the water by removing them chemically.
- Salt -free softeners will not place excess of salt water.
- Filtration medium certified by NSF, scientifically formulated to reduce the effects of hard minerals in the water.

Complete equipment: 1.450,00 €



Specifications

Model: GO EQ-AST-WH
Replacement Filters: GO EQ-AST-WH-R
Flow of classified service: 7 gpm
Maximum working pressure: 20-100 psi
Maximum operating temperature: 40-90° F
Recommended capacity: 6 años

Pure Satisfaction

All Agua Pura products offer a 100% satisfaction guarantee for 90 days. This filtration system is designed and tested to use with genuine Agua Pura spare parts, including spare part filters and all the hardware. The use of spare parts from other manufacturers could result in a loss in the reduction of pollutants, damage to the system or failure and will void its guarantee.

GO EQ-AS20 Anti-sediment system to use with boilers (without tank) for hot water.



The actual results of the test :

The sediment deposits on the component of stainless steel for heating the water were tested with standard GO DVGW W-512.



Unprotected



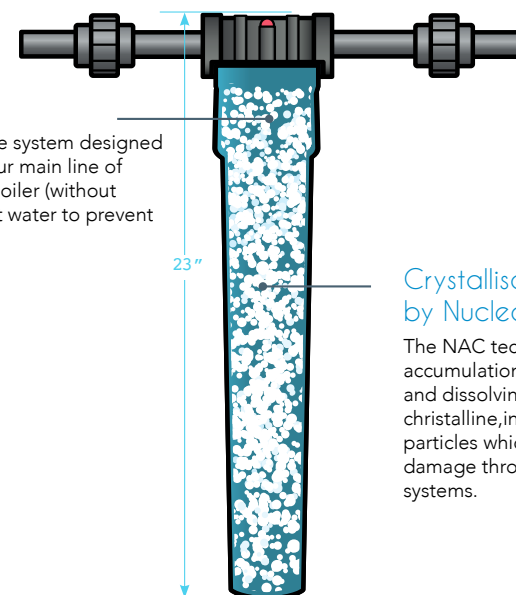
Protected by Simply Soft

Effective and eco-friendly prevention of sediment without the use of chemicals or saline.

Features and Benefits

- Combat the normal problems of hardness such as sediment, accumulations or blockage in the pipes, boilers, accessories, water heaters and other heating elements.
- Prevents and reduces sediment without the use of abrasive chemicals or adding salt into the water.
- Protects and extends the life of your electrical appliances and plumbing to save you money.
- Requires little or no type of maintenance or heavy bags of salt to replace or preserve the chemical levels.
- Green technology of removal of sediments will not place excess of saline waste in our environment.
- Long-term cartridges: 2 years
- An excellent alternative to water softeners with saline basis or sediment retaining devices.
- Models are available to accommodate the flow rated from 0.25 gpm to 10 gpm.
- The GO DVGW-W.512 is tested and has shown that provides a reduction of 98.9% of sediment.

Complete equipment: 399,90 €



A single cartridge system designed to connect to your main line of cold water to a boiler (without tank) for your hot water to prevent sediment.

Crystallisation assisted by Nucleation (NAC)

The NAC technology removes accumulation of sediment transforming and dissolving the hard minerals in crystalline, inactive, harmless, microscopic particles which flow without causing any damage through your water and sewage systems.

Specifications

Model: GO EQ-AS20
Flow of classified service: 10gpm
Maximum working pressure: 100psi/689.5 kPa
Maximum operating temperature: 100°F/38°C
Recommended capacity: 2 years

Benefit of the prevention of sediment free of saline

Unlike salt based water softeners, the anti-sediment NAC technology prevents the formation of sediment naturally, without using or adding sodium or chemicals in your water. It is an eco-friendly solution with data from tests performed and demonstrated by independent laboratories and years of success obtained in the residential and commercial sectors and food services.

Pure Satisfaction

All Agua Pura products offer a 100% satisfaction guarantee for 90 days. This filtration system is designed and tested to use genuine Agua Pura spare parts, including spare part filters and all the hardware. The use of spare parts of other manufacturers could result in a loss in the reduction of pollutants, damage to the system or failure and will void its guarantee.

GO AQ-4000 Drinking water filter on top of the counter.

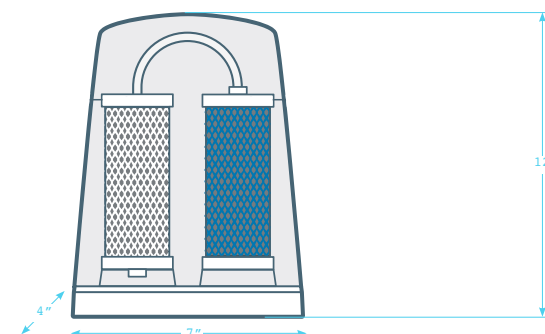


Instantly transforms the tap water in healthy water with great flavour without installation or permanent mountings.

Features and Benefits.

- Provides clean, filtered water quickly, you will never have to wait or fill another jug again.
- Certified by the NSF in 42,53 and 401 regulations, the gold standards of water filtration which reduces 97% of chlorine and chloramines.
- The far-reaching filtration technology that removes 3x more pollutants in the filtered water than the drip jug filters.
- Quick and easy installation, only a few minutes.
- Our unique technology filtration in three stages that removes 60 of the most common contaminants including more than a 99% of lead, herbicides, pesticides, cysts of hydric origin, asbestos, chemical and organic compounds and many more.
- Maintains healthy and beneficial minerals including calcium, magnesium and potassium.

Complete equipment: 99,99 €



Cartridge A

- Turbidity and sediment filters.
- Reduces microscopic particles.
- Improves the taste.
- Significantly reduces the chlorine odour. Filters the chlorine and the chloramines.
- Chlorine is the most concentrated and competitive chemical in tap water. It filters chloramine.
- Chloramine is a mixture of chlorine and ammonia used as an alternative to chlorine.

Cartridge B

- Filters the lead and mercury.
- Maintains the pH levels.
- Improves the taste. Filters synthetic chemicals: herbicides, pesticides, industrial solvents.
- Absolute filtration of 5 Microns.
- Removes hybrid cysts.

Specifications

Model: GO AQ-4000

Replacement filters: GO AQ-4035

Flow of classified service: 5 gpm

Maximum working pressure: 20-80 psi

Maximum operating temperature: 40-90° F

Maximum capacity: 450 gallons



GO AQ-4035 set of replacement cartridges



White
GO AQ-4000W

Black
GO AQ-4000B

Polished steel
GO AQ-4000P

Pure Satisfaction

All Agua Pura products offer a 100% satisfaction guarantee for 90 days. This filtration system is designed and tested to use genuine Agua Pura spare parts including spare parts filters and all the hardware. The use of spare parts from other manufacturers could result in a loss in the reduction of pollutants, damage to the system or failure and will void its guarantee.

GO AQ-5100RF Filter for the refrigerator.

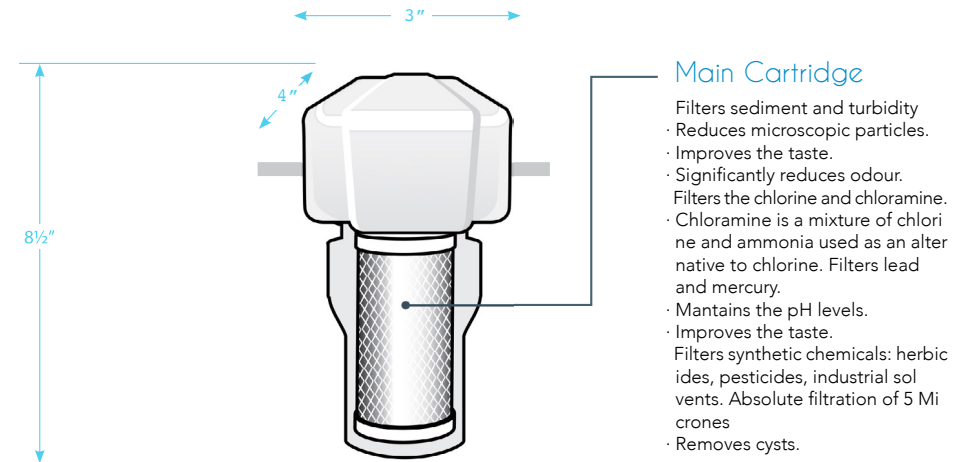


Enjoy our sophisticated system for refrigerators which saves space and water taste great for you.

Features and Benefits

- The high performance filtration for clean, healthy water with great taste from the comfort of your refrigerator.
- NSF certification to reduce more than 97% of chlorine and chloramine apart from lead, asbestos, herbicides, pesticides and many more, reducing 60 common contaminants of water.
- Faster flow rate of 0.5 gallons per minute providing clean and healthy water quickly!
- Easy to install and includes everything you need to get filtered water in less than an hour from the comfort of your fridge.
- Easy to install filters instant replacement.
- Cleverly designed so that all you need to do is a simple quarter turn of the new cartridge cover to remove it with ease. You do not need hoses or water pipes.
- A system of eco-friendly design which reduces the plastic waste minimizing in this way the disposable plastic parts.

Complete equipment: 99,99 €



Specifications

Model: GO AQ-5100RF
Replacement Filters: GO AQ-5100R
Flow of classified service: 0.5 gpm
Maximum working pressure: 20-80 psi
Maximum operating temperature: 40-90° F
Maximum Capacity: 200 gallons



GO AQ-5100R
Replacement
Cartridge

Pure Satisfaction

All Agua Pura products offer a 100% satisfaction guarantee for 90 days. This filtration system is designed and tested to use genuine Aquasana spare parts including spare part filters and all the hardware. The use of spare parts from other manufacturers could result in a loss in the reduction of pollutants, damage to the system or failure and will void its guarantee.

GO AQ-5300 Water filters under the counter.

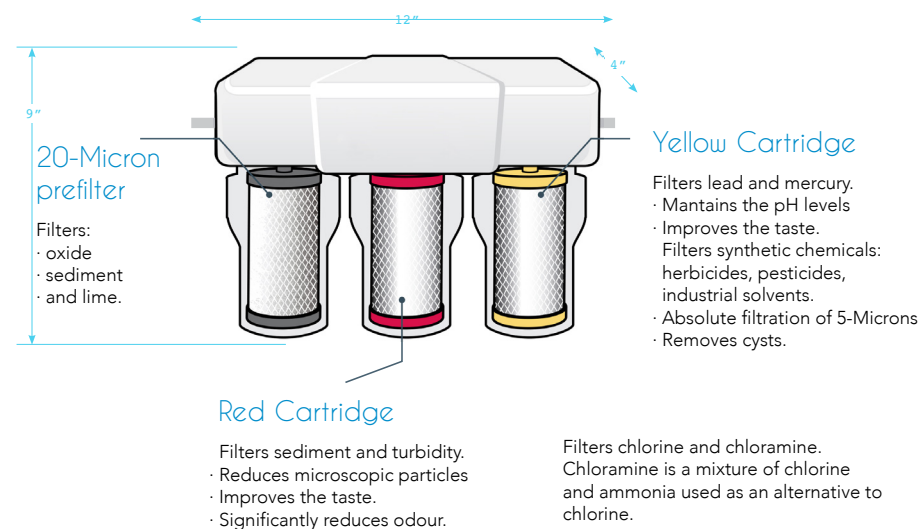


The GO AQ-5300 filter has superior characteristics of water filtration than our GO AQ-5200 filter. In addition, it has an increased capacity of 600 gallons and an additional pre filter to trap sediment and reduce obstructions.

Features and Benefits

- High-performance filtration, provides clean, healthy water and great taste from the comfort of your faucets.
- The 20-Micron pre filter provides additional protection against rust, high content of sediment and lime, which prevents obstructions and maintains a better performance in the water filtration in the areas high in sediments.
- Certified by the NSF, it reduces more than a 97% of chlorine and chloramines, in addition to lead, asbestos, herbicides, pesticides and many more, reducing 66 common pollutants of water.
- Easy to install and includes everything you need to have filtered water from the comfort and convenience of your faucets in less than an hour.
- A faster flow of water of 0,5 gallons per minute that provides clean and healthy water quickly!
- Spare part filters are easy to change. You can change them almost immediately. Cleverly designed so that all you need to do is a simple quarter turn of the new cartridge cover to remove it easily. You do not need to disconnect hoses or pipes.
- With an environmentally friendly system design, which reduces plastic waste while minimizing the plastic parts waste.
- New performance with indicator devices that alert you when is time to change your filters. You will no longer have to guess when you need to change the old filters.

Complete equipment: 249,90 €



Specifications

Model: GO AQ-5300
Replacement Filters: GO AQ-5300R
Flow of classified service: 0.5 gpm
Maximum working pressure: 20-80 psi
Maximum operating temperature : 40-90° F
Maximum Capacity: 600 gallons



GO AQ-5300R Set of replacement cartridge

Pure Satisfaction

All Agua Pura products offer a 100% satisfaction guarantee for 90 days. This filtration system is designed and tested to use genuine Agua Pura spare parts including spare part filters and all the hardware. The use of spare parts from other manufacturers could result in a loss in the reduction of pollutants, damage to the system or failure and will void its guarantee.

GO AQ-RO-3 OPTIMH2O Drinking water filter, reverse osmosis.



Reverse osmosis plus the filtration technology. For an optimal health and hydration.

Features and Benefits

- The first of its kind in putting together the powerful osmosis filtration with selective filtration and remineralization.
- Effectively removes 95% of fluoride, mercury, choline, arsenic, lead, asbestos and more.
- Remineralizes water to return those healthy minerals lost in the reverse osmosis process such as calcium, magnesium and potassium.
- Improves the pH balance to optimize the alkaline in the water.
- Certified by NSF under the 42,53 and 58 regulations or also called the regulation of gold in the water filtration media.

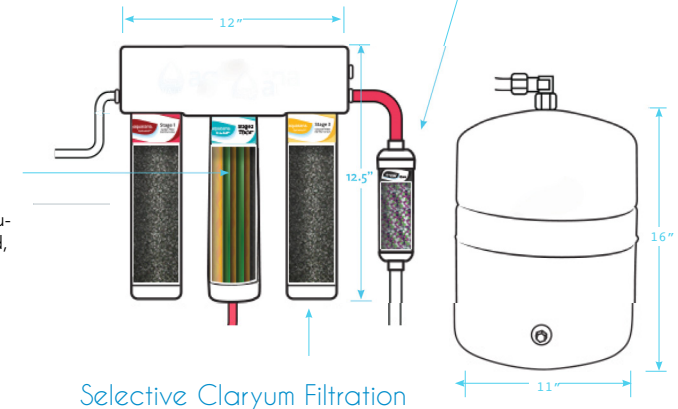
Complete equipment: 499,90 €

Remineralization

Designed to provide healthy amounts of calcium, magnesium and potassium for optimal alkaline pH in the water.

Reverse Osmosis

Reduces 14 pollutants including fluoride, nitrates, lead, radium and arsenic.



Selective Cation Filtration

Reduces more than 60 contaminants including chlorine, chloramines, heavy metals, pesticides and herbicides.

Specifications

Model: GO AQ-RO3

Replacement Filters: GO AQ-RO3-RO, GO AQ-RO3-R, GO AQ-RO3-RM

Flow of service: 0.8 gpm

Maximum pressure: 100 psi

Maximum temperature: 100 F

Maximum capacity: 365 gallons

Pure Satisfaction

All Agua Pura products offer a 100% satisfaction guarantee for 90 days. This filtration system is designed and tested to use genuine Agua Pura spare parts including spare part filters and all the hardware. The use of spare parts from other manufacturers could result in a loss in the reduction of pollutants, damage to the system or failure and will void its guarantee.

GO AQ-PWFS-RB 1 Pumping system of filtered water.



An experience in filtering never available in jug before.

Features and Benefits

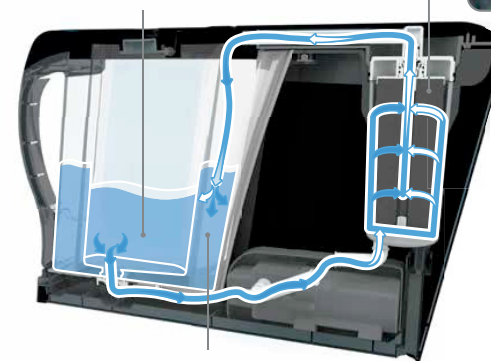
- You get a fantastic taste, healthy water in only a few minutes.
- It is designed to reduce 10 times more contaminants than similar jug filters.
- Tested by NSF International, the standard of excellence for water filtration that reduces 60 harmful contaminants of drinking water including lead, mercury, asbestos, giardia, cryptosporidium, herbicides, pesticides and many more.
- The only filter jug in the market that is proven to remove more than 96% of chlorine and chloramines (ammonia and chlorine disinfectant, regularly used in municipal facilities that provide water service)
- A filtering capacity of 8 times more than the greater part of the jug filters, based on the force of gravity. In this way you do not have to change your filters frequently.
- Includes filter so that you can start to filter your water immediately.
- An eco friendly alternative to the disposable plastic water bottles, a filter cartridge replace approximately 4000 plastic bottles of water.
- The LED lights up the base to alert you when is time to change your filter. No more guessing if or when you need to replace your old filter cartridge.
- Low-cost maintenance system with cartridge easy to change.
- The filtration base allows you to use the jug of 8 cups or the largest 16 cups dispenser for filtered water whenever you want.

Equipo Completo: 149,99 €



Selective Filtration

This is how we filter out the bad things and keep the good ones.



1 Activated charcoal

Reduces organic chemicals: herbicides, pesticides, volatile organic chemicals, MTBE, disinfectant by products and other industrial chemicals for a better taste and odour.

2 Catalytic carbon

Reduces chlorine and chloramine. The result of chlorine and ammonia used to disinfect the water. Up to 30% of households in the U.S.A receive water with chloramines.

3 Ion interchange

Reduces heavy metals such as lead and mercury.

4 Absolute filtration of sub-micron

Reduces cysts resistant to asbestos and chlorine such as cryptosporidium and giardia. The pore structure of sub-micron, which measures only 0.5 microns, highly increases the effective surface area to remove contaminants from the filter, resulting in a superior filtration.

+ Delicious!

Minerals that form naturally in your water such as calcium, potassium and magnesium are retained by our filtration, providing you with a healthier and more delicious water.

SELECTIVE FILTRACION

Reduces more than 60 contaminants Including chlorine, chloramines, metals Pesticides and herbicides.

System Specifications

Model: GO AQ-PWFS-RB1
Flow of classified service: 0.5 gpm
Maximum operating temperature: 40-90° F
Maximum Capacity: 320 gallons
Unit/Box: 1
UPC product: 816749011227

Replacement Specifications

Replacement filters: GO AQ-PWFS-R-R
Flow of classified service: 0.5 gpm
Maximum operating temperature: 40-90° F
Maximum capacity: 320 gallons
Unit/Box: 1
UPC product: 816749011272



Guarantee Information

This filter system is designed and tested for use with genuine Agua Pura parts and replacement parts, including filter replacement and all hardware. Use of parts or replacement parts of another manufacturer could result in loss of performance in reducing pollutants, damage to the system or faults, and will void your warranty.

Quality Water Filtration for *Foodservice*

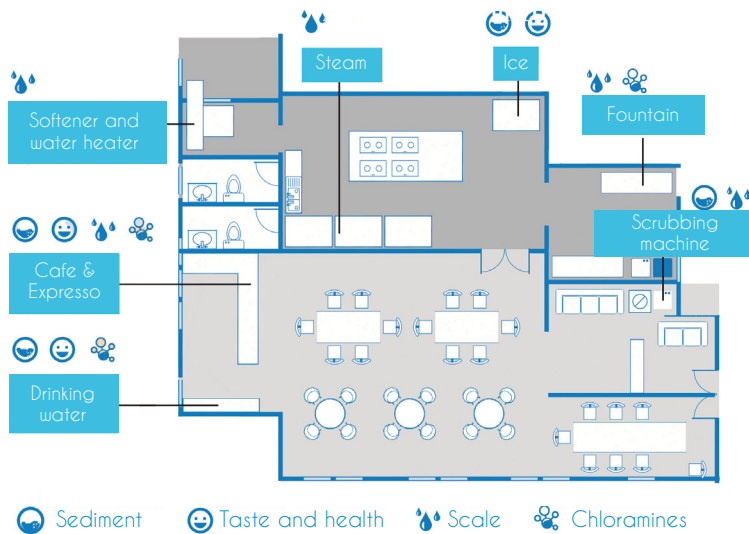
Now the quality of your water can match the quality of your food

Discover why some of the nation's most recognized operators choose to filter their water with us

Go Plus Ibiza series systems are specifically engineered to meet the demands of high volume, high quality foodservice operations with systems that are easy to use and maintain.

How can benefit your restaurant

Our filtration cartridges feature carbon-based Chloramine and Chlorine reduction capabilities that improve the taste of water for sodas, coffee, tea and other water-based beverages. In addition, our sub-micron filtration removes cysts – such as cryptosporidium and giardia – and other harmful contaminants that can impact the quality of your water.



Powerfull

Comprehensive, high performance solutions designed for your needs

- Effectively reduces chlorine, chloramine, scale and cysts, such as cryptosporidium and giardia
- Improves taste of water, ice, soda, coffee and tea

Green

Sustainable for the environment and your budget

- Scale inhibitors extend life of kitchen equipment
- Equipment runs more efficiently saving energy and money

Simple

Easy to use, easy to maintain

- Intuitive design and shut-o valves for easy maintenance
- Features our unique easy change housing for quick, painless replacements



"We decided to ditch bottled water. Our systems enable us to serve fresh, great-tasting water to our guests, without the hassle of plastic bottles. It's better for our operation, the environment, and our guests."

—Tim League, Alamo Drafthouse Cinema

Foodservice Water Filtration Systems CHLORAMINES

Benefits

- Reduces chloramines, chlorine taste and odor, and other offensive contaminants that can adversely affect the taste of beverages.
- Improves the taste of fountain beverages and helps retain the drink's carbonation.
- Sub-micron filtration reduces dirt and particles as small as 0.5 micron in size.
- Reduces possible health contaminants such as Cryptosporidium and Giardia cysts.
- Protects drink system equipment from clogging, corrosion and abrasive wear.
- Patented cartridge system is simple, quick and easy. Internal filter parts are never exposed to handling or contamination.
- Patented quarter-turn connection allows for easy cartridge changes.

Applications

- Ideal for fountain and various multi-use installations

Key Specifications

- Pressure Requirements: 10 – 125 psi (0.7 – 8.6 bar), non-shock
- Temperature: 35 - 100°F (2 - 38°C)
- No electrical connection required



GO-FS-HF1-M

GO-FS-HF2-M



GO-FS-HF3-D2M



GO-FS-HF4-D3M



GO-FS-HF4-D3M

Operation

- Please read and understand entire manual before attempting to assemble, operate and install the filtration system. Installation must comply with state and local laws.
- Risk of leaks, which could lead to flooding, if not installed according to the instructions.
- Proper maintenance of the filtration cartridges is one of the most critical steps to ensuring quality water and equipment longevity.
- The cartridge capacity is dependent upon usage and overall quality of supply water. Cartridges typically last six months; however, when pressure on the exit gauge drops below 10 psi, that is an indicator that the cartridges should be changed.
- Upon installation of the new cartridges, it is recommended that you label them with the install date for tracking purposes.

Installation

- Mount directly to a flat surface
- Install such that cartridges hang down vertically
- Allow 2.5" clearance below the cartridges for easy cartridge replacement
- Flush filter by running water through the system according to cartridge installation instructions
- Refer to Installation and Operation Guide for more detailed guidance

SYSTEM CONFIGURATIONS	MODEL#	FLOW RATES	RATED CAPACITIES (US GAL)	DIMENSIONS (H"XW"XD")	CARTRIDGE SET
HIGH FLOW - 1 PHASE - CHLORAMINE	GO-FS-HF1-M	1.7 / 1.3 / 1.0	3,000 / 4,500 / 6,750	22.25 X 8.00 X 5.25	(1) CLM CARTRIDGE
HIGH FLOW - 2 PHASE - PREFILTER / CHLORAMINE	GO-FS-HF2-DM	1.7 / 1.3 / 1.0	3,000 / 4,500 / 6,750	22.25 X 14.25 X 5.25	(1) SEDIMENT (1) CLM CARTRIDGE
HIGH FLOW - 2 PHASE - CHLORAMINE (2)	GO-FS-HF2-2M	3.4 / 2.6 / 2.0	6,000 / 9,000 / 13,500	22.25 X 14.25 X 5.25	(2) CLM CARTRIDGE
HIGH FLOW - 3 PHASE - PREFILTER / CHLORAMINE (2)	GO-FS-HF3-D2M	3.4 / 2.6 / 2.0	6,000 / 9,000 / 13,500	22.25 X 20.25 X 5.25	(1) SEDIMENT (2) CLM CARTRIDGE
HIGH FLOW - 3 PHASE - CHLORAMINE (3)	GO-FS-HF3-3M	5.1 / 3.9 / 3.0	9,000 / 13,500 / 20,250	22.25 X 20.25 X 5.25	(3) CLM CARTRIDGE
HIGH FLOW - 4 PHASE - PREFILTER / CHLORAMINE (3)	GO-FS-HF4-D3M	5.1 / 3.9 / 3.0	9,000 / 13,500 / 20,250	22.25 X 26.38 X 5.25	(1) SEDIMENT, (3) CLM CARTRIDGE
HIGH FLOW - 4 PHASE - CHLORAMINE (4)	GO-FS-HF4-4M	6.8 / 5.2 / 4.0	12,000 / 18,000 / 27,000	22.25 X 26.38 X 5.25	(4) CLM CARTRIDGE
HIGH FLOW - 5 PHASE - PREFILTER / CHLORAMINE (4)	GO-FS-HF4-PF4M	6.8 / 5.2 / 4.0	12,000 / 18,000 / 27,000	25.75 X 32.38 X 5.25	(4) CLM CARTRIDGES, (1) LOW SEDIMENT (EQ-PFC-20)

Warranty

Agua Pura water filter systems (excluding replacement parts) are covered by a limited warranty against defects and in material and workmanship for a period of one year after date of purchase. Agua Pura replacement parts (filter cartridges and water treatment cartridges) are covered by a limited warranty against defects in material and workmanship for a period of one year after date of purchase.

Foodservice Water Filtration Systems

MULTI-USE

Benefits

- Reduces chloramines, chlorine taste and odor, and other offensive contaminants that can adversely affect the taste of beverages.
- Improves the taste of fountain beverages and helps retain the drink's carbonation.
- Antimicrobial protection inhibits potential bacterial growth.
- Sub-micron filtration reduces dirt and particles as small as 0.5 micron in size.
- Reduces possible health contaminants such as Cryptosporidium and Giardia cysts.
- Protects drink system equipment from clogging, corrosion and abrasive wear.
- Patented cartridge system is simple, quick and easy. Internal filter parts are never exposed to handling or contamination. Patented quarter-turn connection allows for easy cartridge changes.

Applications

- Ideal filtration for fountain and various multi-use applications

Key Specifications

- Pressure Requirements: 10 – 125 psi (0.7 – 8.6 bar), non-shock
- Temperature: 35 - 100°F (2 - 38°C)
- No electrical connection required



GO-FS-HF1-MU GO-FS-HF2-DMU



GO-FS-HF3-D2MU

GO-FS-HF4-D3MU

GO-FS-HF4-PF4MU

Operation

- Please read and understand entire manual before attempting to assemble, operate and install the filtration system. Installation must comply with state and local laws.
- Risk of leaks, which could lead to flooding, if not installed according to the instructions.
- Proper maintenance of the filtration cartridges is one of the most critical steps to ensuring quality water and equipment longevity.
- The cartridge capacity is dependent upon usage and overall quality of supply water. Cartridges typically last six months; however, when pressure on the exit gauge drops below 10 psi, that is an indicator that the cartridges should be changed.
- Upon installation of the new cartridges, it is recommended that you label them with the install date for tracking purposes.

Installation

- Mount directly to a flat surface
- Install such that cartridges hang down vertically
- Allow 2.5" clearance below the cartridges for easy cartridge replacement
- Flush filter by running water through the system according to cartridge installation instructions
- Refer to Installation and Operation Guide for more detailed guidance

SYSTEM CONFIGURATIONS	MODEL#	FLOW RATES	RATED CAPACITIES (US GAL)	DIMENSIONS (H"XW"XD")	CARTRIDGE SET
HIGH FLOW - 1 PHASE - MULTIPURPOSE	GO-FS-HF1-MU	1.7 / 1.3 / 1.0	3,000 / 4,500 / 6,750	22.25 X 8.00 X 5.25	(1) MU CARTRIDGE
HIGH FLOW - 2 PHASE - PREFILTER / MULTUSE	GO-FS-HF2-DMU	1.7 / 1.3 / 1.0	3,000 / 4,500 / 6,750	22.25 X 14.25 X 5.25	(1) SEDIMENT (1) MU CARTRIDGE
HIGH FLOW - 2 PHASE - MULTUSE (2)	GO-FS-HF2-2MU	3.4 / 2.6 / 2.0	6,000 / 9,000 / 13,500	22.25 X 14.25 X 5.25	(2) MU CARTRIDGE
HIGH FLOW - 3 PHASE - PREFILTER / MULTUSE (2)	GO-FS-HF3-D2MU	3.4 / 2.6 / 2.0	6,000 / 9,000 / 13,500	22.25 X 20.25 X 5.25	(1) SEDIMENT (2) MU CARTRIDGE
HIGH FLOW - 3 PHASE - MULTIPLE (3)	GO-FS-HF3-3MU	5.1 / 3.9 / 3.0	9,000 / 13,500 / 20,250	22.25 X 20.25 X 5.25	(3) MU CARTRIDGE
HIGH FLOW - 4 PHASE - PREFILTER / MULTIPURPOSE (3)	GO-FS-HF4-D3MU	5.1 / 3.9 / 3.0	9,000 / 13,500 / 20,250	22.25 X 26.38 X 5.25	(1) SEDIMENT, (3) MU CARTRIDGE
HIGH FLOW - 4 PHASE - MULTIPURPOSE (4)	GO-FS-HF4-4MU	6.8 / 5.2 / 4.0	12,000 / 18,000 / 27,000	22.25 X 26.38 X 5.25	(4) MU CARTRIDGE
HIGH FLOW - 5 PHASE - PREFILTER / MULTIPURPOSE (4)	GO-FS-HF4-PF4MU	6.8 / 5.2 / 4.0	12,000 / 18,000 / 27,000	25.75 X 32.38 X 5.25	(4) MU CARTRIDGES, (1) SEDIMENT-DROP-IN (EQ-PFC20)

Warranty

Agua Pura water filter systems (excluding replacement parts) are covered by a limited warranty against defects and in material and workmanship for a period of one year after date of purchase. Agua Pura replacement parts (filter cartridges and water treatment cartridges) are covered by a limited warranty against defects in material and workmanship for a period of one year after date of purchase.

Foodservice Water Filtration Systems ICE

Benefits

- Reduces chloramines, chlorine taste and odor, and other offensive contaminants that can adversely affect the taste of beverages.
- Sub-micron filtration reduces dirt and particles as small as 0.5 micron in size.
- Reduces possible health contaminants such as Cryptosporidium and Giardia cysts.
- Patented cartridge system is simple, quick and easy. Internal filter parts are never exposed to handling or contamination.
- Patented quarter-turn connection allows for easy cartridge changes.
- Antimicrobial protection inhibits potential bacterial growth.
- Scale inhibitor media keeps ice machines running efficiently.

Applications

- Ideal for dedicated ice applications

Key Specifications

- Pressure Requirements: 10 – 125 psi (0.7 – 8.6 bar), non-shock
- Temperature: 35 - 100°F (2 - 38°C)
- No electrical connection required



GO-FS-HF1-MI

GO-FS-HF2-DMI



GO-FS-HF3-D2MI



GO-FS-HF4-D3MI



GO-FS-HF4-PF4MI

Operation

- Please read and understand entire manual before attempting to assemble, operate and install the filtration system. Installation must comply with state and local laws.
- Risk of leaks, which could lead to flooding, if not installed according to the instructions.
- Proper maintenance of the filtration cartridges is one of the most critical steps to ensuring quality water and equipment longevity.
- The cartridge capacity is dependent upon usage and overall quality of supply water. Cartridges typically last six months; however, when pressure on the exit gauge drops below 10 psi, that is an indicator that the cartridges should be changed.
- Upon installation of the new cartridges, it is recommended that you label them with the install date for tracking purposes.

Installation

- Mount directly to a flat surface
- Install such that cartridges hang down vertically
- Allow 2.5" clearance below the cartridges for easy cartridge replacement
- Flush filter by running water through the system according to cartridge installation instructions
- Refer to Installation and Operation Guide for more detailed guidance

SYSTEM CONFIGURATIONS	MODEL#	FLOW RATES	RATED CAPACITIES (US GAL)	DIMENSIONS (H"XW"XD")	CARTRIDGE SET
HIGH FLOW - 1 PHASE - ICE	GO-FS-HF1-I	1.7 / 1.3 / 1.0	3,000 / 4,500 / 6,750	22.25 X 8.00 X 5.25	(1) ICE CARTRIDGE
HIGH FLOW - 2 PHASE - PRE-FILTER / ICE	GO-FS-HF2-DI	1.7 / 1.3 / 1.0	3,000 / 4,500 / 6,750	22.25 X 14.25 X 5.25	(1) SEDIMENT (1) ICE CARTRIDGE
HIGH FLOW - 2 PHASE - ICE (2)	GO-FS-HF2-2I	3.4 / 2.6 / 2.0	6,000 / 9,000 / 13,500	22.25 X 14.25 X 5.25	(2) ICE CARTRIDGE
HIGH FLOW - 3 PHASE PRE-FILTER / ICE (2)	GO-FS-HF3-D2I	3.4 / 2.6 / 2.0	6,000 / 9,000 / 13,500	22.25 X 20.25 X 5.25	(1) SEDIMENT (2) ICE CARTRIDGE
HIGH FLOW - 3 PHASE - ICE (2)	GO-FS-HF3-3I	5.1 / 3.9 / 3.0	9,000 / 13,500 / 20,250	22.25 X 20.25 X 5.25	(2) ICE CARTRIDGE

Warranty

Agua Pura water filter systems (excluding replacement parts) are covered by a limited warranty against defects and in material and workmanship for a period of one year after date of purchase. Agua Pura replacement parts (filter cartridges and water treatment cartridges) are covered by a limited warranty against defects in material and workmanship for a period of one year after date of purchase.

Foodservice Water

Filtration Systems

STEAM

Benefits

- Reduces chloramines, chlorine taste and odor, and other offensive contaminants along with scale and scale build-up that can adversely affect steam equipment.
- Sub-micron filtration reduces dirt and particles as small as 0.5 micron in size.
- Reduces possible health contaminants such as Cryptosporidium and Giardia cysts.
- Patented cartridge system is simple, quick and easy. Internal filter parts are never exposed to handling or contamination. Patented quarter-turn connection allows for easy cartridge changes.

Applications

- Engineered to support steam equipment applications

Key Specifications

- Pressure Requirements: 10 – 125 psi (0.7 – 8.6 bar), non-shock
- Temperature: 35 - 100°F (2 - 38°C)
- No electrical connection required



GO-FS-HF2-ML



GO-FS-HF3-2ML

Operation

- Please read and understand entire manual before attempting to assemble, operate and install the filtration system. Installation must comply with state and local laws.
- Risk of leaks, which could lead to flooding, if not installed according to the instructions.
- Proper maintenance of the filtration cartridges is one of the most critical steps to ensuring quality water and equipment longevity.
- The cartridge capacity is dependent upon usage and overall quality of supply water. Cartridges typically last six months; however, when pressure on the exit gauge drops below 10 psi, that is an indicator that the cartridges should be changed.
- Upon installation of the new cartridges, it is recommended that you label them with the install date for tracking purposes.

Installation

- Mount directly to a flat surface
- Install such that cartridges hang down vertically
- Allow 2.5" clearance below the cartridges for easy cartridge replacement
- Flush filter by running water through the system according to cartridge installation instructions
- Refer to Installation and Operation Guide for more detailed guidance

SYSTEM CONFIGURATIONS	MODEL#	FLOW RATES	RATED CAPACITIES (US GAL)	DIMENSIONS (H"XW"XD")	CARTRIDGE SET
HIGH FLOW - 2 STAGE - STEAM	GO-FS-HF2-ML	1.7 / 1.3 / 1.0	3,000 / 4,500 / 6,750	22.25 X 14.25 X 5.25	(1) CHLORAMINE, (1) SCALE
HIGH FLOW - 3 STAGE - STEAM	GO-FS-HF3-2ML	3.4 / 2.6 / 2.0	6,000 / 9,000 / 13,500	22.25 X 20.25 X 5.25	(2) CHLORAMINE, (1) SCALE

Warranty

Agua Pura water filter systems (excluding replacement parts) are covered by a limited warranty against defects and in material and workmanship for a period of one year after date of purchase. Agua Pura replacement parts (filter cartridges and water treatment cartridges) are covered by a limited warranty against defects in material and workmanship for a period of one year after date of purchase.

Foodservice Water

Filtration Systems

CHLORAMINE PLUS

Benefits

- Reduces chloramine as well as chlorine taste and odor effects that can adversely affect the taste of water.
- Reduces harmful contaminants such as Lead, Mercury, Asbestos, MTBE, and VOCs.
- Sub-micron filtration reduces dirt and particles as small as 1 micron in size.
- Improves the taste of fountain beverages and helps retain the drink's carbonation.
- Protects drink system equipment from clogging, corrosion and abrasive wear.
- Patented cartridge system is simple, quick and easy. Internal filter parts are never exposed to handling or contamination.
- Patented quarter-turn connection allows for easy cartridge changes

Applications

- Ideal for beverage and various multi-use installations

Key Specifications

- Pressure Requirements: 20 – 125 psi (1.3 – 8.6 bar), non-shock
- Temperature: 35 - 100°F (2 - 38°C)
- No electrical connection required



GO FS-HF1-C+



GO FS-HF2-DC+



GO FS-HF3-D2C+



GO FS-HF4-D3C+



GO FS-HF4-PF4C+

Operation

- Please read and understand entire manual before attempting to assemble, operate and install the filtration system. Installation must comply with state and local laws.
- Risk of leaks, which could lead to flooding, if not installed according to the instructions.
- Proper maintenance of the filtration cartridges is one of the most critical steps to ensuring quality water and equipment longevity.
- The cartridge capacity is dependent upon usage and overall quality of supply water. Cartridges typically last six months; however, when pressure on the exit gauge drops below 10 psi, that is an indicator that the cartridges should be changed.
- Upon installation of the new cartridges, it is recommended that you label them with the install date for tracking purposes.

Installation

- Mount directly to a flat surface
- Install such that cartridges hang down vertically
- Allow 2.5" clearance below the cartridges for easy cartridge replacement
- Flush filter by running water through the system according to cartridge installation instructions
- Refer to Installation and Operation Guide for more detailed guidance

SYSTEM CONFIGURATIONS	MODEL#	FLOW RATE	RATED CAPACITIES (US GAL)	DIMENSIONS (H"XW"XD")	CARTRIDGE SET
QUICK CONNECTION - 1 PHASE - CHLORAMINE	GO-FS-QC-M	1.7 / 1.3 / 1.0	3,000 / 4,500 / 6,750	22.25 X 4.25 X 4.50	(1) CLM CARTRIDGE
QUICK CONNECTION - 1 PHASE - MULTIUSE	GO-FS-QC-MU	1.7 / 1.3 / 1.0	3,000 / 4,500 / 6,750	22.25 X 4.25 X 4.50	(1) MU CARTRIDGE
QUICK CONNECTION - 1 PHASE - ICE	GO-FS-QC-I	1.7 / 1.3 / 1.0	3,000 / 4,500 / 6,750	22.25 X 4.25 X 4.50	(1) ICE CARTRIDGE
QUICK CONNECTION - 1 PHASE - SCALE	GO-FS-QC-L	1.7 / 1.3 / 1.0	6 MESES	15.25 X 4.25 X 4.50	(1) CARTRIDGE SCALE

Warranty

Agua Pura water filter systems (excluding replacement parts) are covered by a limited warranty against defects and in material and workmanship for a period of one year after date of purchase. Agua Pura replacement parts (filter cartridges and water treatment cartridges) are covered by a limited warranty against defects in material and workmanship for a period of one year after date of purchase.

Foodservice Water

Filtration Systems

QUICK CONNECT

System Benefits

Quick Connect - Chloramines (GO-FS-QC-M)

- Reduces chloramines, chlorine taste and odor, and other offensive contaminants that can adversely affect the taste of water

- Reduces possible health contaminants such as Cryptosporidium and Giardia cysts

- Sub-micron filtration reduces dirt and particles as small as 0.5 micron in size

- Improves the taste of fountain beverages and helps retain the drink's carbonation

- Protects drink system equipment from clogging, corrosion and abrasive wear

Quick Connect - Multi-Use (GO-FS-QC-MU)

- Offers the same benefits of GO-FS-QC-M

- Antimicrobial protection inhibits potential bacterial growth

Quick Connect - Ice (GO-FS-QC-I)

- Offers the same benefits of GO-FS-QC-MU

- Scale inhibitor media keeps ice machines and/or coffee/tea brewers running efficiently

Quick Connect - Scale (GO-FS-QC-L)

- Scale inhibitor media keeps ice machines and/or coffee/tea brewers running efficiently

Applications

Quick Connect - Chloramines (GO-FS-QC-M)

- Ideal for various beverage service requirements

Quick Connect - Multi-Use (GO-FS-QC-MU)

- Ideal for beverage and various multi-use installations

Quick Connect - Ice (GO-FS-QC-I)

- Ideal for dedicated ice and coffee/tea applications

Quick Connect - Scale (GO-FS-QC-L)

- Ideal for dedicated ice and coffee/tea applications, where scale reduction (but not water filtration) is required

Key Specifications

- Pressure Requirements: 10 – 125 psi (0.7 – 8.6 bar), non-shock

- Temperature: 35 - 100°F (2 - 38°C)

- No electrical connection required

Operation

- Please read and understand entire manual before attempting to assemble, operate and install the filtration system. Installation must comply with state and local laws.

- Risk of leaks, which could lead to flooding, if not installed according to the instructions.

- Proper maintenance of the filtration cartridges is one of the most critical steps to ensuring quality water and equipment longevity.

- The cartridge capacity is dependent upon usage and overall quality of supply water. Cartridges typically last six months; however, when pressure on the exit gauge drops below 10 psi, that is an indicator that the cartridges should be changed.

- Upon installation of the new cartridges, it is recommended that you label them with the install date for tracking purposes.

GO-FS-QC-M

GO-FS-QC-MU

GO-FS-QC-I

GO-FS-QC-L

Installation

- Mount directly to a flat surface

- Install such that cartridges hang down vertically

- Allow 2.5" clearance below the cartridges for easy cartridge replacement

- Flush filter by running water through the system according to cartridge installation instructions

- Refer to Installation and Operation Guide for more detailed guidance



SYSTEM CONFIGURATION	MODEL#	FLOW RATES	RATED CAPACITIES (US GAL)	DIMENSIONS (H"XW"XD")	BUILD
QUICK CONNECT - 1 STAGE - CHLORAMINE	GO-FS-QC-M	1.7 / 1.3 / 1.0	3,000 / 4,500 / 6,750	22.25 X 4.25 X 4.50	(1) CLM CARTRIDGE
QUICK CONNECT - 1 STAGE - MULTI-USE	GO-FS-QC-MU	1.7 / 1.3 / 1.0	3,000 / 4,500 / 6,750	22.25 X 4.25 X 4.50	(1) MU CARTRIDGE
QUICK CONNECT - 1 STAGE - ICE	GO-FS-QC-I	1.7 / 1.3 / 1.0	3,000 / 4,500 / 6,750	22.25 X 4.25 X 4.50	(1) ICE CARTRIDGES
QUICK CONNECT - 1 STAGE - SCALE	GO-FS-QC-L	1.7 / 1.3 / 1.0	6 MESES	15.25 X 4.25 X 4.50	(1) SCALE CARTRIDGE

Warranty

Agua Pura water filter systems (excluding replacement parts) are covered by a limited warranty against defects and in material and workmanship for a period of one year after date of purchase. Agua Pura replacement parts (filter cartridges and water treatment cartridges) are covered by a limited warranty against defects in material and workmanship for a period of one year after date of purchase.

Foodservice Water

Filtration Systems

QUICK CONNECT

Benefits

- Reduces chloramines, chlorine taste and odor, and other offensive contaminants that can adversely affect the taste of beverages.
- Improves the taste of fountain beverages and helps retain the drink's carbonation.
- Sub-micron filtration reduces dirt and particles as small as 0.5 micron in size.
- Reduces possible health contaminants such as Cryptosporidium and Giardia cysts.
- Protects drink system equipment from clogging, corrosion and abrasive wear.
- Patented cartridge system is simple, quick and easy. Internal filter parts are never exposed to handling or contamination. Patented quarter-turn connection allows for easy cartridge changes.

Applications

- Ideal filtration for multiple equipment applications, requiring dual-port flow of water with and without scale inhibition media.

Key Specifications

- Pressure Requirements: 10 – 125 psi (0.7 – 8.6 bar), non-shock
- Temperature: 35 - 100°F (2 - 38°C)
- No electrical connection required



GO-FS-HF5-D3ML



GO-FS-HF5-PF4MUL

Operation

- Please read and understand entire manual before attempting to assemble, operate and install the filtration system. Installation must comply with state and local laws.
- Risk of leaks, which could lead to flooding, if not installed according to the instructions.
- Proper maintenance of the filtration cartridges is one of the most critical steps to ensuring quality water and equipment longevity.
- The cartridge capacity is dependent upon usage and overall quality of supply water. Cartridges typically last six months; however, when pressure on the exit gauge drops below 10 psi, that is an indicator that the cartridges should be changed.
- Upon installation of the new cartridges, it is recommended that you label them with the install date for tracking purposes.

Installation

- Mount directly to a flat surface
- Install such that cartridges hang down vertically
- Allow 2.5" clearance below the cartridges for easy cartridge replacement
- Flush filter by running water through the system according to cartridge installation instructions
- Refer to Installation and Operation Guide for more detailed guidance

SYSTEM CONFIGURATIONS	MODEL#	FLOW RATE	RATED CAPACITIES (US GAL)	DIMENSIONS (H"XW"XD")	CARTRIDGE SET
HIGH FLOW - 5 PHASE - CLMCOMBO	GO-FS-HF5-D3ML	5.1 / 3.9 / 3.0	9,000 / 13,500 / 20,250	22.25 X 32.38 X 5.25	(1) SEDIMENT, (3) CLM, (1) PHASE
HIGH FLOW - 5 PHASE - CLMCOMBO W PREFILTER	GO-FS-HF5-PF4ML	6.8 / 5.2 / 4.0	12,000 / 18,000 / 27,000	25.75 X 38.38 X 5.25	(4) CLM, (1) PHASE, (1) SEDIMENT - DROP-IN (EQ-PFC-20)
HIGH FLOW - 5 PHASE - MULTIPURPOSE COMBO	GO-FS-HF5-D3MUL	5.1 / 3.9 / 3.0	9,000 / 13,500 / 20,250	22.25 X 32.38 X 5.25	(1) SEDIMENT, (3) MULTIPURPOSE, (1) PHASE
HIGH FLOW - 5 PHASE - MU COMBO W PREFILTER	GO-FS-HF5-PF4MUL	6.8 / 5.2 / 4.0	12,000 / 18,000 / 27,000	25.75 X 38.38 X 5.25	(4) MULTIPURPOSE, (1) PHASE, (1) SEDIMENT - DROP-IN (EQ-PFC-20)
HIGH FLOW - 4 PHASE - CLMCOMBO	GO-FS-HF4-D2ML	3.4 / 2.6 / 2.0	6,000 / 9,000 / 13,500	22.25 X 26.38 X 5.25	(1) SEDIMENT, (2) CLM, (1) PHASE
HIGH FLOW - 4 PHASE - MU COMBO	GO-FS-HF4-D2MUL	3.4 / 2.6 / 2.0	6,000 / 9,000 / 13,500	22.25 X 26.38 X 5.25	(1) SEDIMENT, (2) MULTIPURPOSE, (1) PHASE

Warranty

Agua Pura water filter systems (excluding replacement parts) are covered by a limited warranty against defects and in material and workmanship for a period of one year after date of purchase. Agua Pura replacement parts (filter cartridges and water treatment cartridges) are covered by a limited warranty against defects in material and workmanship for a period of one year after date of purchase.

Foodservice Water Filtration Systems CHLORAMINE

Benefits

- Reduces chloramines, chlorine taste and odor and other offensive contaminants - including cysts such as cryptosporidium and giardia - that can adversely affect the taste of beverages.

Specifications

- Micron rating:
0.5
- Rated Capacity at Service Flow Rate:
3,600 gallons at 1.7 gpm
(13,627 liters at 6.43 Lpm)
5,500 gallons at 1.33 gpm
(20,819 liters at 5.03 Lpm)
8,000 gallons at 1.0 gpm
(30,283 liters at 3.78 Lpm)
- Pressure Requirements:
10 - 125 psi (0.7 - 8.6 bar),
non-shock
- Temperature:
35 - 100°F (2 - 38°C)
- Dimensions:
Height - 17" (43.2 cm)
Diameter - 5¼" (13.4 cm)
- No electrical connection required

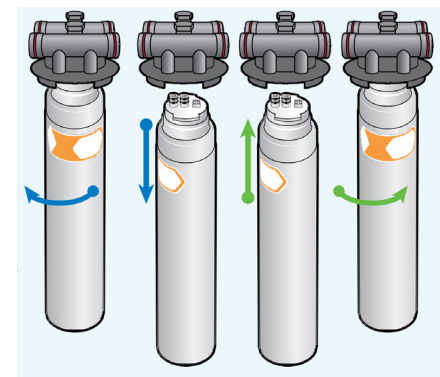


GO-FS-CLM-17-R

The contaminants or other substances removed or reduced by this water filtration system are not necessarily in your water. Do not use with water that is microbiologically unsafe or of unknown quality without adequate disinfection before or after the system. Systems certified for cyst reduction may be used with disinfected water that may contain filterable cysts.

Operation

- Please read and understand entire manual before attempting to assemble, operate and install the filtration system. Installation must comply with state and local laws.
- Risk of leaks, which could lead to flooding, if not installed according to the instructions.
- Proper maintenance of the filtration cartridges is one of the most critical steps to ensuring quality water and equipment longevity.
- The cartridge capacity is dependent upon usage and overall quality of supply water. Cartridges typically last six months; however, when pressure on the exit gauge drops below 10 psi, that is an indicator that the cartridges should be changed.
- Upon installation of the new cartridges, it is recommended that you label them with the install date for tracking purposes.



Warranty

Agua Pura water filter systems (excluding replacement parts) are covered by a limited warranty against defects and in material and workmanship for a period of one year after date of purchase. Agua Pura replacement parts (filter cartridges and water treatment cartridges) are covered by a limited warranty against defects in material and workmanship for a period of one year after date of purchase.

Installation

- Step 1: Shut off water supply.
- Step 2: Twist cartridge clockwise until it becomes unlocked from the manifold; Pull down cartridge from manifold; Discard.
- Step 3: Attach cartridge into the manifold by making sure all connection points are aligned. Push the cartridge in and turn the cartridge counterclockwise until the cartridge is locked in.
- Step 4: Check all connections and proceed to turn on water supply.
- Step 5: Once system is pressurized, check for leaks.
- Step 6: Open flushing valve and flush the cartridge(s) by running water through at full force for at least 10 minutes. This will purge the system free of air and flush any fines, ensuring maximum filter life and high performing water at startup.

Foodservice Water Filtration Systems

MULTI-USE

Benefits

- Reduces chloramine and chlorine taste and odor effects as well as other offensive contaminants.
- Antimicrobial protection inhibits potential bacterial growth.
- Submicron filtration reduces dirt and particles as small as 0.5 micron in size and possible health contaminants such as cryptosporidium and giardia cysts.
- Protects drink system equipment from clogging, corrosion and abrasive wear.

Specifications

- Micron rating: 0.5
- Rated Capacity at 1.7 GPM (6.4 LPM):
Chloramine 3,600 Gallons (13,627 Liters)
Chlorine 9,000 Gallons (34,069 Liters)
- Pressure Requirements:
10 – 125 psi (0.7 – 8.6 bar), non-shock
- Temperature:
35 - 100°F (2 - 38°C)
- Dimensions:
Height - 17" (43.2 cm)
Diameter - 5¼" (13.4 cm)
- No electrical connection required



CO-FS-MU-C-17-R

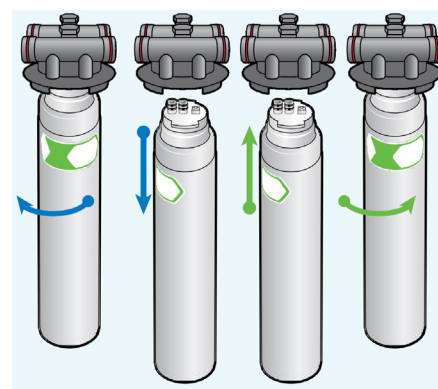
The contaminants or other substances removed or reduced by this water filtration system are not necessarily in your water. Do not use with water that is microbiologically unsafe or of unknown quality without adequate disinfection before or after the system. Systems certified for cyst reduction may be used with disinfected water that may contain filterable cysts.

Operation

- Please read and understand entire manual before attempting to assemble, operate and install the filtration system. Installation must comply with state and local laws.
- Risk of leaks, which could lead to flooding, if not installed according to the instructions.
- Proper maintenance of the filtration cartridges is one of the most critical steps to ensuring quality water and equipment longevity.
- The cartridge capacity is dependent upon usage and overall quality of supply water. Cartridges typically last six months; however, when pressure on the exit gauge drops below 10 psi, that is an indicator that the cartridges should be changed.
- Upon installation of the new cartridges, it is recommended that you label them with the install date for tracking purposes.

Installation

- Step 1: Shut off water supply.
- Step 2: Twist cartridge clockwise until it becomes unlocked from the manifold; Pull down cartridge from manifold; Discard.
- Step 3: Attach cartridge into the manifold by making sure all connection points are aligned. Push the cartridge in and turn the cartridge counterclockwise until the cartridge is locked in.
- Step 4: Check all connections and proceed to turn on water supply.
- Step 5: Once system is pressurized, check for leaks.
- Step 6: Open flushing valve and flush the cartridge(s) by running water through at full force for at least 10 minutes. This will purge the system free of air and flush any fines, ensuring maximum filter life and high performing water at startup.



Warranty

Agua Pura water filter systems (excluding replacement parts) are covered by a limited warranty against defects and in material and workmanship for a period of one year after date of purchase. Agua Pura replacement parts (filter cartridges and water treatment cartridges) are covered by a limited warranty against defects in material and workmanship for a period of one year after date of purchase.

Foodservice Water Filtration Systems ICE

Benefits

- Reduces chloramine and chlorine taste and odor effects as well as other offensive contaminants.
- Scale inhibitor media keeps ice machines running efficiently.
- Antimicrobial protection inhibits potential bacterial growth.
- Submicron filtration reduces dirt and particles as small as 0.5 micron in size including related health contaminants such as cryptosporidium and giardia cysts.

Specifications

- Micron rating: 0.5
- Rated Capacity at 1.7 GPM (6.4 LPM):
Chloramine 3,600 Gallons (13,627 Liters)
Chlorine 9,000 Gallons (34,069 Liters)
- Pressure Requirements:
10 – 125 psi (0.7 – 8.6 bar), non-shock
- Temperature:
35 - 100°F (2 - 38°C)
- Dimensions:
Height - 17" (43.2 cm)
Diameter - 5¼" (13.4 cm)
- No electrical connection required



GO-FS-ICE-C-17-R

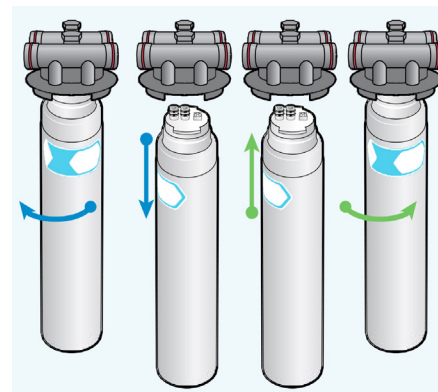
The contaminants or other substances removed or reduced by this water filtration system are not necessarily in your water. Do not use with water that is microbiologically unsafe or of unknown quality without adequate disinfection before or after the system. Systems certified for cyst reduction may be used with disinfected water that may contain filterable cysts.

Operation

- Please read and understand entire manual before attempting to assemble, operate and install the filtration system. Installation must comply with state and local laws.
- Risk of leaks, which could lead to flooding, if not installed according to the instructions.
- Proper maintenance of the filtration cartridges is one of the most critical steps to ensuring quality water and equipment longevity.
- The cartridge capacity is dependent upon usage and overall quality of supply water. Cartridges typically last six months; however, when pressure on the exit gauge drops below 10 psi, that is an indicator that the cartridges should be changed.
- Upon installation of the new cartridges, it is recommended that you label them with the install date for tracking purposes.

Installation

- Step 1: Shut off water supply.
- Step 2: Twist cartridge clockwise until it becomes unlocked from the manifold; Pull down cartridge from manifold; Discard.
- Step 3: Attach cartridge into the manifold by making sure all connection points are aligned. Push the cartridge in and turn the cartridge counterclockwise until the cartridge is locked in.
- Step 4: Check all connections and proceed to turn on water supply.
- Step 5: Once system is pressurized, check for leaks.
- Step 6: Open flushing valve and flush the cartridge(s) by running water through at full force for at least 10 minutes. This will purge the system free of air and flush any fines, ensuring maximum filter life and high performing water at startup.



Warranty

Agua Pura water filter systems (excluding replacement parts) are covered by a limited warranty against defects and in material and workmanship for a period of one year after date of purchase. Agua Pura replacement parts (filter cartridges and water treatment cartridges) are covered by a limited warranty against defects in material and workmanship for a period of one year after date of purchase.

Foodservice Water Filtration Systems SCALE

Benefits

- Reduces the harmful effects of scale and scale build-up to protect pipes and equipment.

Specifications

- Service Flow Rate: 5.0 gpm
- Pressure Requirements:
10 - 125 psi (0.7 - 8.6 bar), non-shock
- Temperature:
35 - 100°F (2 - 38°C)
- Dimensions:
Height - 17" (43.2 cm)
Diameter - 5¼" (13.4 cm)
- No electrical connection required



GO-FS-SC-10-R

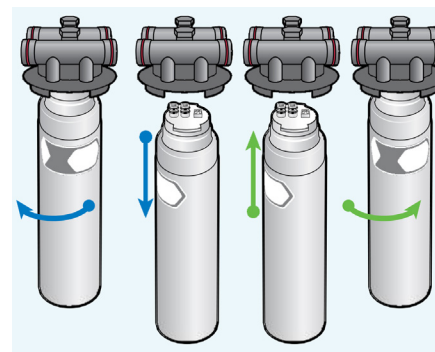
The contaminants or other substances removed or reduced by this water filtration system are not necessarily in your water. Do not use with water that is microbiologically unsafe or of unknown quality without adequate disinfection before or after the system. Systems certified for cyst reduction may be used with disinfected water that may contain filterable cysts.

Operation

- Please read and understand entire manual before attempting to assemble, operate and install the filtration system. Installation must comply with state and local laws.
- Risk of leaks, which could lead to flooding, if not installed according to the instructions.
- Proper maintenance of the filtration cartridges is one of the most critical steps to ensuring quality water and equipment longevity.
- The cartridge capacity is dependent upon usage and overall quality of supply water. Cartridges typically last six months; however, when pressure on the exit gauge drops below 10 psi, that is an indicator that the cartridges should be changed.
- Upon installation of the new cartridges, it is recommended that you label them with the install date for tracking purposes.

Installation

- Step 1: Shut off water supply.
- Step 2: Twist cartridge clockwise until it becomes unlocked from the manifold; Pull down cartridge from manifold; Discard.
- Step 3: Attach cartridge into the manifold by making sure all connection points are aligned. Push the cartridge in and turn the cartridge counterclockwise until the cartridge is locked in.
- Step 4: Check all connections and proceed to turn on water supply.
- Step 5: Once system is pressurized, check for leaks.
- Step 6: Open flushing valve and flush the cartridge(s) by running water through at full force for at least 10 minutes. This will purge the system free of air and flush any fines, ensuring maximum filter life and high performing water at startup.



Warranty

Agua Pura water filter systems (excluding replacement parts) are covered by a limited warranty against defects and in material and workmanship for a period of one year after date of purchase. Agua Pura replacement parts (filter cartridges and water treatment cartridges) are covered by a limited warranty against defects in material and workmanship for a period of one year after date of purchase.

Foodservice Water

Filtration Systems

SEDIMENT

Benefits

- 5.0 micron pre-filter captures rust, sediment, and particulates that impact water quality.

Especificaciones

- Micron rating:
5.0
- Service Flow Rate:
6.25 gpm
- Pressure Requirements:
10 - 125 psi (0.7 - 8.6 bar),
non-shock
- Temperature:
35 - 100°F (2 - 38°C)
- Dimensions:
Height - 17" (43.2 cm)
Diameter - 5¼" (13.4 cm)
- No electrical connection required



GO-FS-SC-10-R

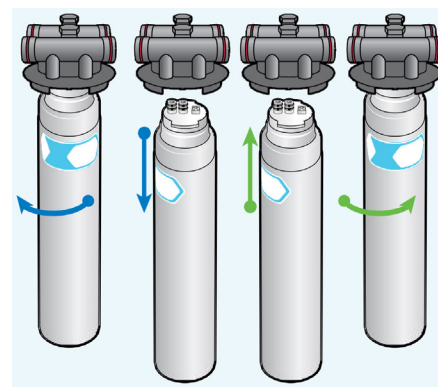
The contaminants or other substances removed or reduced by this water filtration system are not necessarily in your water. Do not use with water that is microbiologically unsafe or of unknown quality without adequate disinfection before or after the system. Systems certified for cyst reduction may be used with disinfected water that may contain filterable cysts.

Operation

- Please read and understand entire manual before attempting to assemble, operate and install the filtration system. Installation must comply with state and local laws.
- Risk of leaks, which could lead to flooding, if not installed according to the instructions.
- Proper maintenance of the filtration cartridges is one of the most critical steps to ensuring quality water and equipment longevity.
- The cartridge capacity is dependent upon usage and overall quality of supply water. Cartridges typically last six months; however, when pressure on the exit gauge drops below 10 psi, that is an indicator that the cartridges should be changed.
- Upon installation of the new cartridges, it is recommended that you label them with the install date for tracking purposes.

Installation

- Step 1: Shut off water supply.
- Step 2: Twist cartridge clockwise until it becomes unlocked from the manifold; Pull down cartridge from manifold; Discard.
- Step 3: Attach cartridge into the manifold by making sure all connection points are aligned. Push the cartridge in and turn the cartridge counterclockwise until the cartridge is locked in.
- Step 4: Check all connections and proceed to turn on water supply.
- Step 5: Once system is pressurized, check for leaks.
- Step 6: Open flushing valve and flush the cartridge(s) by running water through at full force for at least 10 minutes. This will purge the system free of air and flush any fines, ensuring maximum filter life and high performing water at startup.



Warranty

Agua Pura water filter systems (excluding replacement parts) are covered by a limited warranty against defects and in material and workmanship for a period of one year after date of purchase. Agua Pura replacement parts (filter cartridges and water treatment cartridges) are covered by a limited warranty against defects in material and workmanship for a period of one year after date of purchase.

Foodservice Water

Filtration Systems

CHLORAMINE + LEAD

Benefits

- Reduces chloramine as well as chlorine taste and odor effects that can adversely affect the taste of water.
- Reduces harmful contaminants such as Lead, Mercury, Asbestos, MTBE, and VOCs.
- Reduces possible health contaminants such as Cryptosporidium and Giardia cysts.
- Improves the taste of fountain beverages and helps retain the drink's carbonation.
- Protects drink system equipment from clogging, corrosion and abrasive wear.

Specifications

- Micron rating: 0.5
- Rated Capacity at Service Flow Rate: 1,340 gallons at 1.4 gpm (5,072 liters at 5.3 lpm)
- Pressure Requirements: 10 - 125 psi (0.7 - 8.6 bar), non-shock
- Temperature: 35 - 100°F (2 - 38°C)
- Dimensions: Height - 17" (43.2 cm) Diameter - 5¼" (13.4 cm)
- No electrical connection required



GO-FS-CLM+-17-R

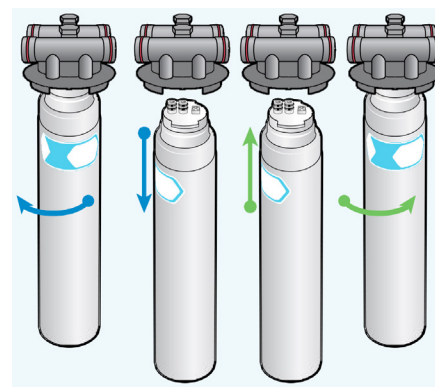
The contaminants or other substances removed or reduced by this water filtration system are not necessarily in your water. Do not use with water that is microbiologically unsafe or of unknown quality without adequate disinfection before or after the system. Systems certified for cyst reduction may be used with disinfected water that may contain filterable cysts.

Operation

- Please read and understand entire manual before attempting to assemble, operate and install the filtration system. Installation must comply with state and local laws.
- Risk of leaks, which could lead to flooding, if not installed according to the instructions.
- Proper maintenance of the filtration cartridges is one of the most critical steps to ensuring quality water and equipment longevity.
- The cartridge capacity is dependent upon usage and overall quality of supply water. Cartridges typically last six months; however, when pressure on the exit gauge drops below 10 psi, that is an indicator that the cartridges should be changed.
- Upon installation of the new cartridges, it is recommended that you label them with the install date for tracking purposes.

Installation

- Step 1: Shut off water supply.
- Step 2: Twist cartridge clockwise until it becomes unlocked from the manifold; Pull down cartridge from manifold; Discard.
- Step 3: Attach cartridge into the manifold by making sure all connection points are aligned. Push the cartridge in and turn the cartridge counterclockwise until the cartridge is locked in.
- Step 4: Check all connections and proceed to turn on water supply.
- Step 5: Once system is pressurized, check for leaks.
- Step 6: Open flushing valve and flush the cartridge(s) by running water through at full force for at least 10 minutes. This will purge the system free of air and flush any fines, ensuring maximum filter life and high performing water at startup.



Warranty

Agua Pura water filter systems (excluding replacement parts) are covered by a limited warranty against defects and in material and workmanship for a period of one year after date of purchase. Agua Pura replacement parts (filter cartridges and water treatment cartridges) are covered by a limited warranty against defects in material and workmanship for a period of one year after date of purchase.

Foodservice Water Filtration Systems

CHLORAMINE

Benefits

- Reduces chloramines, chlorine taste and odor and other offensive contaminants - including cysts such as cryptosporidium and giardia - that can adversely affect the taste of beverages.
- Compatible with foodservice filtration systems.

Specifications

- Micron rating: 0.5
- Rated Capacity at Service Flow Rate:
3,600 gallons at 1.7 gpm (13,627 liters at 6.43 Lpm)
5,500 gallons at 1.33 gpm (20,819 liters at 5.03 Lpm)
8,000 gallons at 1.0 gpm (30,283 liters at 3.78 Lpm)
- Pressure Requirements:
10 – 125 psi (0.7 – 8.6 bar), non-shock
- Temperature:
35 - 100°F (2 - 38°C)
- Dimensions:
Height - 17" (43.2 cm)
Diameter - 5¼" (13.4 cm)
- No electrical connection required

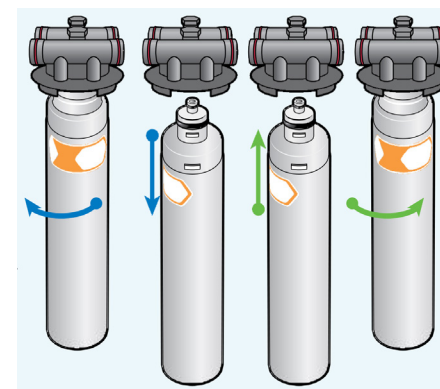


GO-EP-CLM-17-R

The contaminants or other substances removed or reduced by this water filtration system are not necessarily in your water. Do not use with water that is microbiologically unsafe or of unknown quality without adequate disinfection before or after the system. Systems certified for cyst reduction may be used with disinfected water that may contain filterable cysts.

Operation

- Please read and understand entire manual before attempting to assemble, operate and install the filtration system. Installation must comply with state and local laws.
- Risk of leaks, which could lead to flooding, if not installed according to the instructions.
- Proper maintenance of the filtration cartridges is one of the most critical steps to ensuring quality water and equipment longevity.
- The cartridge capacity is dependent upon usage and overall quality of supply water. Cartridges typically last six months; however, when pressure on the exit gauge drops below 10 psi, that is an indicator that the cartridges should be changed.
- Upon installation of the new cartridges, it is recommended that you label them with the install date for tracking purposes.



Warranty

Agua Pura water filter systems (excluding replacement parts) are covered by a limited warranty against defects and in material and workmanship for a period of one year after date of purchase. Agua Pura replacement parts (filter cartridges and water treatment cartridges) are covered by a limited warranty against defects in material and workmanship for a period of one year after date of purchase.

Installation

- Step 1: Shut off water supply.
- Step 2: Twist cartridge clockwise until it becomes unlocked from the manifold; Pull down cartridge from manifold; Discard.
- Step 3: Attach cartridge into the manifold by making sure all connection points are aligned. Push the cartridge in and turn the cartridge counterclockwise until the cartridge is locked in.
- Step 4: Check all connections and proceed to turn on water supply.
- Step 5: Once system is pressurized, check for leaks.
- Step 6: Open flushing valve and flush the cartridge(s) by running water through at full force for at least 10 minutes. This will purge the system free of air and flush any fines, ensuring maximum filter life and high performing water at startup.

Foodservice Water Filtration Systems

MULTI-USE

Benefits

- Reduces chlorine taste and odor and other offensive contaminants - such as cryptosporidium and giardia cysts - that can adversely impact water-based beverages.
- Antimicrobial protection inhibits potential bacterial growth.
- Submicron filtration reduces dirt and particles as small as 0.5 micron in size and possible health contaminants such as cryptosporidium and giardia cysts.
- Protects drink system equipment from clogging, corrosion and abrasive wear.
- Compatible with foodservice filtration systems.

Specifications

- Micron rating: 0.5
- Service Flow Rate:
Maximum 1.67 gpm (6.3 Lpm)
- Rated Capacity: 9,000 gallons
- Pressure Requirements:
10 – 125 psi (0.7 – 8.6 bar), non-shock
- Temperature: 35 - 100°F (2 - 38°C)
- Dimensions:
Height - 17" (43.2 cm)
Diameter - 5¼" (13.4 cm)
- No electrical connection required



GO-EP-MU-17-R

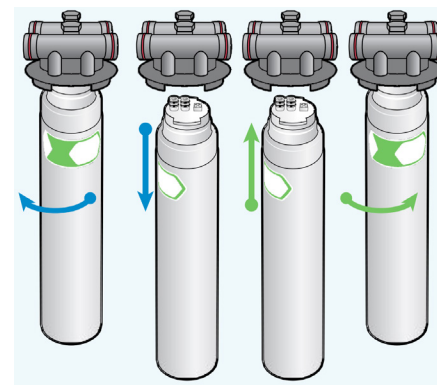
The contaminants or other substances removed or reduced by this water filtration system are not necessarily in your water. Do not use with water that is microbiologically unsafe or of unknown quality without adequate disinfection before or after the system. Systems certified for cyst reduction may be used with disinfected water that may contain filterable cysts.

Operation

- Please read and understand entire manual before attempting to assemble, operate and install the filtration system. Installation must comply with state and local laws.
- Risk of leaks, which could lead to flooding, if not installed according to the instructions.
- Proper maintenance of the filtration cartridges is one of the most critical steps to ensuring quality water and equipment longevity.
- The cartridge capacity is dependent upon usage and overall quality of supply water. Cartridges typically last six months; however, when pressure on the exit gauge drops below 10 psi, that is an indicator that the cartridges should be changed.
- Upon installation of the new cartridges, it is recommended that you label them with the install date for tracking purposes.

Installation

- Step 1: Shut off water supply.
- Step 2: Twist cartridge clockwise until it becomes unlocked from the manifold; Pull down cartridge from manifold; Discard.
- Step 3: Attach cartridge into the manifold by making sure all connection points are aligned. Push the cartridge in and turn the cartridge counterclockwise until the cartridge is locked in.
- Step 4: Check all connections and proceed to turn on water supply.
- Step 5: Once system is pressurized, check for leaks.
- Step 6: Open flushing valve and flush the cartridge(s) by running water through at full force for at least 10 minutes. This will purge the system free of air and flush any fines, ensuring maximum filter life and high performing water at startup.



Warranty

Agua Pura water filter systems (excluding replacement parts) are covered by a limited warranty against defects and in material and workmanship for a period of one year after date of purchase. Agua Pura replacement parts (filter cartridges and water treatment cartridges) are covered by a limited warranty against defects in material and workmanship for a period of one year after date of purchase.

Foodservice Water Filtration Systems

ICE

Benefits

- Reduces chlorine taste and odor and other offensive contaminants.
- Scale inhibitor media keeps ice machines running efficiently.
- Antimicrobial protection inhibits potential bacterial growth.
- Submicron filtration reduces dirt and particles as small as 0.5 micron in size and reduces health contaminants such as cryptosporidium and giardia cysts.
- Compatible with foodservice filtration systems.

Specifications

- Micron rating: 0.5
- Service Flow Rate:
Maximum 1.67 gpm (6.3 Lpm)
- Rated Capacity:
9,000 gallons
- Pressure Requirements:
10 – 125 psi (0.7 – 8.6 bar), non-shock
- Temperature: 35 – 100°F (2 – 38°C)
- Dimensions:
Height - 17" (43.2 cm)
Diameter - 5¼" (13.4 cm)
- No electrical connection required

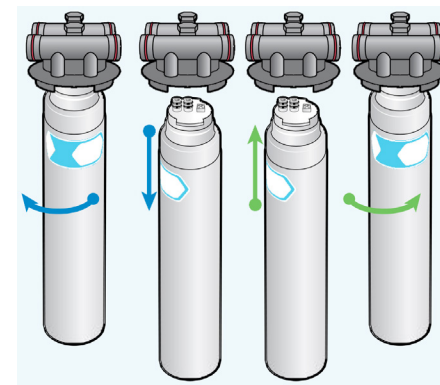


GO-EP-ICE-17-R

The contaminants or other substances removed or reduced by this water filtration system are not necessarily in your water. Do not use with water that is microbiologically unsafe or of unknown quality without adequate disinfection before or after the system. Systems certified for cyst reduction may be used with disinfected water that may contain filterable cysts.

Operation

- Please read and understand entire manual before attempting to assemble, operate and install the filtration system. Installation must comply with state and local laws.
- Risk of leaks, which could lead to flooding, if not installed according to the instructions.
- Proper maintenance of the filtration cartridges is one of the most critical steps to ensuring quality water and equipment longevity.
- The cartridge capacity is dependent upon usage and overall quality of supply water. Cartridges typically last six months; however, when pressure on the exit gauge drops below 10 psi, that is an indicator that the cartridges should be changed.
- Upon installation of the new cartridges, it is recommended that you label them with the install date for tracking purposes.



Warranty

Agua Pura water filter systems (excluding replacement parts) are covered by a limited warranty against defects and in material and workmanship for a period of one year after date of purchase. Agua Pura replacement parts (filter cartridges and water treatment cartridges) are covered by a limited warranty against defects in material and workmanship for a period of one year after date of purchase.

Installation

- Step 1: Shut off water supply.
- Step 2: Twist cartridge clockwise until it becomes unlocked from the manifold; Pull down cartridge from manifold; Discard.
- Step 3: Attach cartridge into the manifold by making sure all connection points are aligned. Push the cartridge in and turn the cartridge counterclockwise until the cartridge is locked in.
- Step 4: Check all connections and proceed to turn on water supply.
- Step 5: Once system is pressurized, check for leaks.
- Step 6: Open flushing valve and flush the cartridge(s) by running water through at full force for at least 10 minutes. This will purge the system free of air and flush any fines, ensuring maximum filter life and high performing water at startup.

Foodservice Water Filtration Systems

CHLORINE

Benefits

- Carbon block filter finely polishes water for high quality beverage and food applications.
- Reduces chlorine taste and odor and other offensive contaminants that can adversely affect the taste of water and beverages.
- Reduces extra fine dirt and particles as small as 0.5 microns in size.
- Compatible with foodservice filtration systems.

Specifications

- Micron rating: 0.5
- Service Flow Rate:
Maximum 2.5 gpm (9.46 Lpm)
- Rated Capacity:
10,000 gallons
- Pressure Requirements:
10 – 125 psi (0.7 – 8.6 bar), non-shock
- Temperature:
35 - 100°F (2 - 38°C)
- Dimensions:
Height - 17" (43.2 cm)
Diameter - 5¼" (13.4 cm)
- No electrical connection required

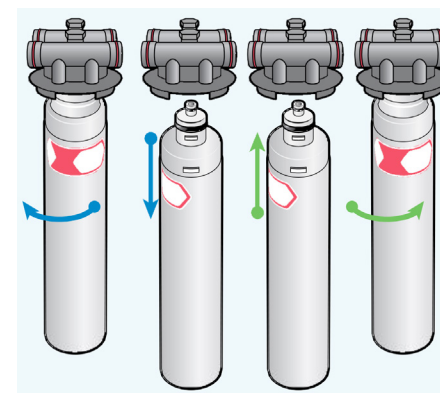


GO-EP-CTO-17-R

The contaminants or other substances removed or reduced by this water filtration system are not necessarily in your water. Do not use with water that is microbiologically unsafe or of unknown quality without adequate disinfection before or after the system. Systems certified for cyst reduction may be used with disinfected water that may contain filterable cysts.

Operation

- Please read and understand entire manual before attempting to assemble, operate and install the filtration system. Installation must comply with state and local laws.
- Risk of leaks, which could lead to flooding, if not installed according to the instructions.
- Proper maintenance of the filtration cartridges is one of the most critical steps to ensuring quality water and equipment longevity.
- The cartridge capacity is dependent upon usage and overall quality of supply water. Cartridges typically last six months; however, when pressure on the exit gauge drops below 10 psi, that is an indicator that the cartridges should be changed.
- Upon installation of the new cartridges, it is recommended that you label them with the install date for tracking purposes.



Warranty

Agua Pura water filter systems (excluding replacement parts) are covered by a limited warranty against defects and in material and workmanship for a period of one year after date of purchase. Agua Pura replacement parts (filter cartridges and water treatment cartridges) are covered by a limited warranty against defects in material and workmanship for a period of one year after date of purchase.

Installation

- Step 1: Shut off water supply.
- Step 2: Twist cartridge clockwise until it becomes unlocked from the manifold; Pull down cartridge from manifold; Discard.
- Step 3: Attach cartridge into the manifold by making sure all connection points are aligned. Push the cartridge in and turn the cartridge counterclockwise until the cartridge is locked in.
- Step 4: Check all connections and proceed to turn on water supply.
- Step 5: Once system is pressurized, check for leaks.
- Step 6: Open flushing valve and flush the cartridge(s) by running water through at full force for at least 10 minutes. This will purge the system free of air and flush any fines, ensuring maximum filter life and high performing water at startup.

Table of Prices

GO-EQ 600	1.142,85 €
GO-EQ-WELL-UV	2.350,00 €
GO-RHINO EQ1000	2.550,00 €
GO-SIMPLY SOFT EQ-AST-WH	1.450,00 €
GO-EQ-AS20	399,90 €
GO-AQ-4000	99,99 €
GO-AQ-5100-RF	99,99 €
GO-AQ-5300	249,90 €
GO-AQ-RO-3-OPTIMH2O	499,90 €
GO-AQ-PWFS-RB1	149,99 €
GO-FS-HF1-M	300,00 €
GO-FS-HF2-M	485,00 €
GO-FS-HF3-D2M	633,00 €
GO-FS-HF4-D3M	833,00 €
GO-FS-HF4-D3M	923,00 €
GO-FS-HF1-MU	300,00 €
GO-FS-HF2-DMU	418,00 €
GO-FS-HF3-D2MU	633,00 €
GO-FS-HF4-D3MU	833,00 €
GO-FS-HF4-PF4MU	1.324,00 €

(Taxes and shipping costs included)

GO-FS-HF1-MI	310,00 €
GO-FS-HF2-DMI	428,00 €
GO-FS-HF3-D2MI	505,00 €
GO-FS-HF4-D3MI	653,00 €
GO-FS-HF4-PF4MI	853,00 €
GO-FS-HF2-2ML	465,00 €
GO-FS-HF3-2ML	680,00 €
GO-FS-QC-M	145,00 €
GO-FS-QC-MU	145,00 €
GO-FS-QC-I	155,00 €
GO-FS-QC-L	125,00 €
GO-FS-HF5-D3ML	1.013,00 €
GO-FS-HF5-PF4MUL	1.504,00 €
GO-FS-CLM-17-R	100,00 €
GO-FS-MU-C-17-R	100,00 €
GO-FS-ICE-C-17-R	110,00 €
GO-FS-SC-10-R	80,00 €
GO-EP-CLM-17-R	100,00 €
GO-EP-CTO-17-R	70,00 €
GO-EP-MU-17-R	84,00 €



IBIZA

GOPLUS.ES +34 971 338 565 · +34 678 989 003 · INFO@GOPLUS.ES
C/ LLAUDADORS N1, NAVE 3. POLIGONO INDUSTRIAL MONTE CRISTO, SAN RAFAEL, IBIZA